

# SHELLY MOBILE APPLICATION FOR

# Shelly PLUS 1PM



## Introduction

Shelly devices can be controlled and managed directly in the local network or by using the Shelly cloud service accessible via the Internet. Download the Shelly Cloud Application by scanning the QR code above, or access the devices through the Embedded web interface, explained further down in the user guide. Shelly devices are compatible with Amazon Echo and Google Home supported functionalities. See details at <https://shelly.cloud/compatibility/>.

## Registration

The first time you load the Shelly Cloud mobile app, you have to create an account which can manage all your Shelly devices. You need to use an actual e-mail because that e-mail will be used in case of a forgotten password!

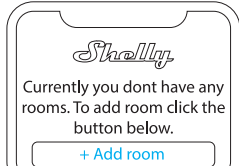
## Forgotten Password

In case you forget or lose your password, click the "Forgot Password?" link on the login screen and type the e-mail you used in your registration. You will receive an e-mail with a link to a page where you can reset your password. The link is unique and can be used only once.

**⚠ ATTENTION!** If you are unable to reset your password, you have to reset your device (as explained in "Device Inclusion" section, Step 1).

## First steps

After registering, create your first room (or rooms), where you are going to add and use your Shelly devices. Shelly Cloud allows you to create scenes for automatic control of devices at predefined hours or based on other parameters like temperature, humidity, light, etc. (with available sensors in Shelly Cloud). Shelly Cloud allows easy control and monitoring using a mobile phone, tablet, or PC. Shelly Plus 1PM can be grouped with other devices in the application, as well as be set to trigger actions on other Shelly devices. Setting parameters for lights, controlling blinds, etc., is also supported.



## Device Inclusion

### Step 1

When the installation of Shelly is done and the power is turned on, Shelly will create its own Wi-Fi Access Point (AP).

**⚠ WARNING!** In case the device has not created its own AP Wi-Fi network with SSID like **ShellyPlus1PM-f008d1d8bd68**, please check if the device is connected according to the Installation Instructions. If you still do not see an active Wi-Fi network with SSID like **ShellyPlus1PM-f008d1d8bd68**, or you want to add the device to another Wi-Fi network, reset the de-

vice. If the device has been powered on, you have to restart it by powering it off and then again on. After that you have one minute to press 5 consecutive times the button/switch connected to the SW terminal. You should hear the relay trigger itself. After the trigger sound, Shelly Plus 1PM will return to AP mode. If not, please repeat or contact our customer support at: [support@shelly.cloud](mailto:support@shelly.cloud).

### Step 2

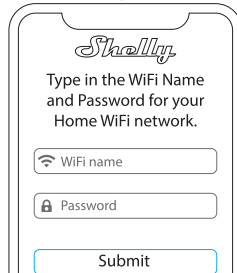
Please keep in mind that Shelly devices' inclusion is different on iOS and Android devices.

1. **iOS inclusion** - On your iOS device, open the Settings menu > WLAN and connect to the Wi-Fi network created by your Shelly device, i.e. **ShellyPlus1PM-f008d1d8bd68** (fig. 1). Open your Shelly app again and type in your home Wi-Fi credentials (fig. 2).

fig. 1



fig. 2



2. **Android inclusion** - From the hamburger menu on the main screen of your Shelly App choose "Add device". Then choose your home network and type in your password (fig. 3). After that, pick the Shelly device you want to include. The name of the device will be similar to: **ShellyPlus1PM-f008d1d8bd68** (fig. 4)

fig. 3

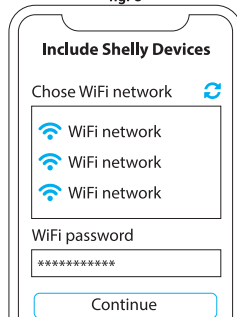
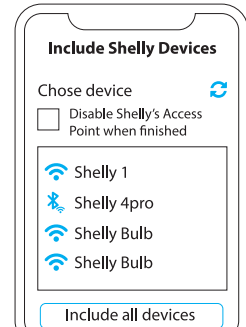


fig. 4



### Step 3

Approximately 30 sec. after discovering any new devices on the local Wi-Fi network, a list will be displayed in the "Discovered Devices" room by default.



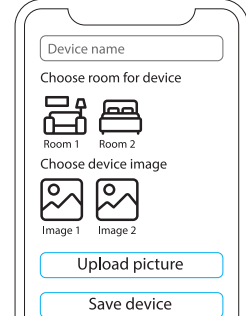
### Step 4

Select "Discovered devices" and choose the device you want to include in your account.



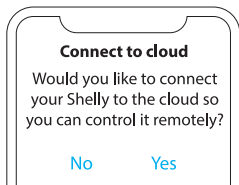
### Step 5

Enter a name for the device (in the "Device Name" field). Choose a "Room" where the device will be positioned and controlled from. You can choose an icon or add a picture to make it easier to recognize. Press "Save device".



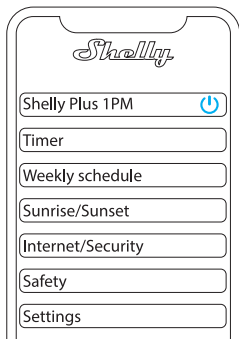
## Step 6

To control Shelly devices only through the local network, press "No"



## Device settings

After your Shelly device is added in the application, you can control it, change its settings, and automate the way it works. To switch the device on and off, use the ON/OFF button. For device management, simply click on the device's name. From there you may control the device, as well as edit its appearance and settings.



**Edit device** - allows you to change the device's name, room and picture.

**General Device settings** – allows you to change settings.

**Timer** - Allows you to manage the power supply automatically. You may use:

- **Auto OFF:** After turning on, the relay output will automatically shut down after a predefined time (in seconds).
- **Auto ON:** After turning off, the relay output will be automatically turned on after a predefined time (in seconds).

**Schedules** - This function requires working connection to the Internet. Shelly may turn on/off automatically at a predefined time and day throughout the week. You may add up to 20 weekly schedules.

**Sunrise/Sunset** - This function requires working connection to the Internet. Shelly receives actual information through the Internet about the time of sunrise and sunset in your area. Shelly may turn on/off automatically at sunrise/sunset, or at a specified time before or after sunrise/sunset.

**Power on default mode** - This setting determines the initial output state of the device after power on:

- **ON:** When the device is powered on, the output will be powered on by default.
- **OFF:** Even if the device is powered on, the output will be powered off by default.

**Restore last mode** - When power is restored, the device will return to the last state it was in before the last power off/shutdown.

**Firmware update** - shows your current firmware version. If a newer version is available, you can update your Shelly device by clicking Update.

**Factory reset** - remove Shelly from your account and return it

to its factory settings.

**Device information** - here you can see the unique ID of your device and the IP it got from the Wi-Fi network.

## THE EMBEDDED WEB INTERFACE

Shelly can be set and controlled through a web browser.

### Abbreviations used

**Shelly ID** - the unique name of the device. It consists of 12 hexadecimal characters, the base MAC address of the device. It may include numbers and letters, for example **f008d1d8bd68**.

**SSID** - the name of the Wi-Fi network, created by the device, for example **ShellyPlus1PM-f008d1d8bd68**.

**Access Point (AP)** - the mode in which the device creates its own Wi-Fi connection point with the respective name (SSID).

**Wi-Fi** - the mode in which the device is connected to another Wi-Fi network.

### Initial inclusion

#### Step 1

Install Shelly following the connection diagrams described in the instructions included with the device, and place it into the junction box. After turning the power on, Shelly will create its own Wi-Fi network (AP).

**⚠ WARNING!** If you don't see the Wi-Fi -> AP please follow step 1 from the Device Inclusion section of this guide.

#### Step 2

Shelly Plus 1PM has created its own Wi-Fi network (AP), with name (SSID) such as **ShellyPlus1PM-f008d1d8bd68**. Connect to it with your phone, tablet, or PC.

#### Step 3

Type **192.168.33.1** into the address field of your browser to load the web interface of Shelly.

### General - Home Page

This is the home page of the embedded web interface. If it has been set up correctly, you will see information about the state of the switch (ON/OFF), as well as functionality menus.

### Channel settings

General settings about the channel. Here you can configure I/O settings, channel's state, channel's name, consumption type, etc.

**Input/output settings** - input mode and relay type define the way the attached switch or button controls the output state. The possible input modes are "button" and "switch", and the relay mode can be chosen depending on the preferred usage of the device. "Set relay power on default" allows you to choose the default state of the relay when power is on.

**Max Power Protection** - configure Shelly to turn off when a defined power consumption limit is reached. The range is 1-3500W. After typing the desired power limit, press Save.

**Consumption type** - Choose the type of appliance that the device will be controlling and measuring i.e lights, heating.

**PIN lock** - Restrict control of the Shelly device through the web interface by settings a PIN code. After typing the details in the respective fields, press "Restrict Shelly".

**Timers** - same as in the "Shelly Device Settings" section, Timers.

**Schedules** - same as in the "Shelly Device Settings" section, Schedules.

**Webhooks** - use events to trigger http endpoints. You can add up to 20 webhooks.

**Device** - get information about your device's firmware version and location. Perform reboot and factory reset. Set your time zone and geo-location manually, or enable/disable automatic detection.

**Networks** - configure Wi-Fi, AP, Cloud, Bluetooth, MQTT settings.

**Cloud** - Enable or Disable connection to the Cloud service.

**Leave unprotected** - removing the notification for disabled authorization.

**Enable authentication** - you can turn authentication on or off. This is where you can change your username and password. You must enter a new username and the new password, then press Save to save the changes.

## MANAGING IN RELAY MODE

### Relay screen

Here you can control, monitor and change the settings for turning the power on and off. You can also see the current status of the connected appliance to Shelly > Buttons > Settings > On and OFF. To control Shelly, press relay:

- To turn on the connected circuit press **Turn ON**
  - To turn off the connected circuit press **Turn OFF**
- Press the icon to go to the previous menu.

### Shelly management settings

The same as the Device Inclusion section section of the guide.

