

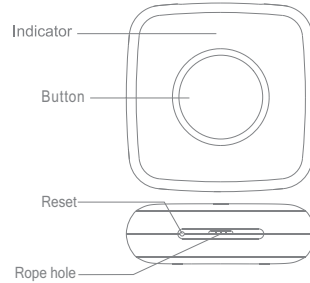
User Manual



Scan QR code to download Smartlife App

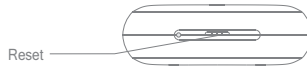
Product Description

Built-in wireless module, pressing button will send signal to network host so as to realize the alarm and remote control function.



Network Settings

- Remove battery sheet and power is connected, make sure that mobile has connected 2.4GHz WiFi and added Zigbee gateway successfully on App
- Open Smartlife App, click "add sub-device" on the "smart gateway" screen.
- Insert needle to reset hole for more than 5 seconds until indicator blinks, then click "LED already blink" for matching.



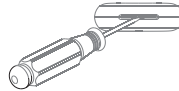
- After adding successfully, you will find the device on "My home" screen.

Kindly notice:

If you need to change a new battery, please first remove battery and trigger reset hole many times (more than 15 times), then install the new battery after the device is fully discharged.

The method of changing battery:

Use flat head screwdriver that wraps a layer of cloth to insert hole, then pull gently.
(Notice: don't hurt the cover of device)



Product specifications:

Battery	CR2032
Working temperature	-20℃~60℃
Working humidity	≤95%RH (non-condensing)
Emission frequency	10dBm
Emission current	peak value 45mA, average 1~2mA
Quiescent current	2~3uA
Emission distance	100m+ (Open space)
Wireless frequency	Zigbee 2.4GHz

Packing List

- Sensor ×1
- User manual ×1
- Needle ×1

Preparation For Use

- ① Mobile phone is connected to 2.4GHz Wi-Fi



Ensure that the smart phone is within the same Wi-Fi network of the Smart Gateway to ensure an effective connection between the smart phone and the Smart Gateway.

- ② Download and open the App

In the App Store, search for the relevant App or scan the QR code on the package/manual to download.

If you are downloading the App for the first time, please tap "Register" to register your account. If you already have an account, please click the "Login" button.

Electronic Information Products Toxic and Hazardous Substances Declaration

Part name	Toxic or harmful substances or elements				
	Lead Pb	Mercury Hg	Cadmium Cd	Hexavalent chromium Cr (VI)	Polybrominated biphenyl PBB
PCB board	○	○	○	○	○
Housing	○	○	○	○	○
Cable	○	○	○	○	○

- : Indicates that the content of this toxic and hazardous substance in all homogeneous materials of this part is below the maximum limit specified in SJ/T1163-2006 Requirements for Concentration Limits for Certain Hazardous Substances in Electronic Information Products.
- X: Indicates that the toxic or hazardous substance contained in at least one of the homogeneous materials of the part exceeds the maximum limit specified in the SJ/T1163-2006 standard.



The figures in this label indicate that the product has an environmental protection use period of 10 years under conditions of normal use, and some parts may also have an environmentally friendly use period mark. The environmental protection use period is based on the number indicated by the mark.

Please read user manual carefully before use