

55mm

55mm

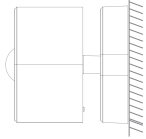
Installation instructions

Illustration of connection between product body and base



Base bracket adapter plate
snaps into the bottom of the product body

Illustration of double-sided adhesive paste between base and wall

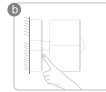


Peel off the protective film on the base
stick the base to the wall

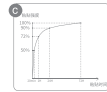
Double-sided adhesive paste instructions



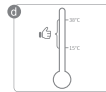
The surface to be pasted must be clean and smooth without rust, oil or dust, etc.



In order to achieve a good adhesive effect, a certain pressure must be applied to the adhesive and the adhesive surface, so that the adhesive and the adhesive surface are in full contact.



VHB double-sided tape has initial adhesion, but it takes 72 hours to reach maximum strength, during this period, do not perform structural operations.



The paste temperature should not be lower than 10 °C, because if the temperature is too low, the initial adhesion of the tape will be greatly reduced, resulting in longer curing time, the paste surface can be properly heat-treated before paste.

Installation environment

- This product is only suitable for indoor use, outdoor installation is prohibited;
- It is forbidden to install near convection places such as fan outlets, windows, air conditioner outlets, etc., otherwise the hot air flow disturbance and personnel walking will cause false alarms, please draw curtains if possible;
- It is forbidden to install near the heat source, such as direct sunlight, heater, stove, etc;
- No other partitions such as screens, furniture, large bonsai, etc. are allowed within the detection range.

Product specification

Product name	PIR motion sensor
Product model	XZ-CGV3
Battery type	CR2 3V 850mAh
Detection distance	3m~7m(adjustable)
Detection angle	120°~150°(adjustable)
Working temperature	-10 °C ~50 °C
Working humidity	≤95%RH(no condensation)
Wireless protocol	Zigbee
Product size	56.2x56.2x58.4mm
Product weight	about 67g

Packing list

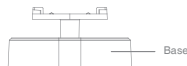
- Sensor x1
- Screw set x1
- User manual x1
- Base adhesive x1

PIR Motion Sensor

product user manual

Product information

The PIR motion sensor can detect the movement of people or animals in the environment through infrared, and combines with other devices to implement intelligent application scenarios.



Preparation for use



Make sure that the product is within the effective coverage of the smart host (gateway) Zigbee network to ensure the effective connection between the product and the smart host (gateway) Zigbee network.

*Make sure that the smart host has been added.

- Download and open the APP

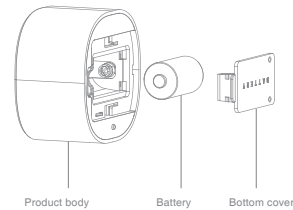
Search for "Smart Life" in the App store or scan the QR code in the manual to download and install the App. Press the "Register" button to register an account if this is your first time use; if you already have an account, press the "Login" button.



Scan the QR code to download "Smart Life" App

Preparation for use

- Battery replacement / installation diagram:



Product body Battery Bottom cover

Network Access Setting

- Install the battery to the device successfully, and ensure that the mobile phone is connected to the network and the smart gateway has been successfully added;
- Open the App, on the "Smart Gateway" page, click the "Add Sub Device" button, and select "Motion Detector";
- Press the reset button for more than 5 seconds until the indicator flashes, then add the device according to the App instructions;
- After adding successfully, you can find the device in the "My Home" list.

Please read the instruction manual carefully before using the product