

## Smart Motion Sensor

Wi-Fi Version

Model: WIFI-702

Version: 1.0



- 1 -

## Product Description

The core component of the smart motion sensor is the infrared sensor (PIR sensor), which works through the cooperation of the optical system to detect the thermal radiation in a certain area. When someone moves in the detection area, the infrared thermal radiation of the detector will change. The detector uses a fully digital CPU processor, adopting automatic temperature compensation technology to prevent low sensitivity caused by the temperature variation. It adopts the IoT Wi-Fi technology to connect the infrared detector to the cloud platform, make users to receive alarm information in the first time

## Applicable Place

Suitable for residential, shopping malls, warehouses, restaurants, parking lots, libraries, schools, hospitals, etc.

## Function Description

1. Imported passive infrared sensor with higher precision.
2. Customized Fresnel lens, more stable and reliable.
3. Specialized detection angle design.
4. Support alarm light signal, network indicator.
5. Support on-site alarm (LED flashing) and remote alarm (push to mobile APP via Wi-Fi connection cloud platform).
6. Long-life power supply design, the battery can work 1 year after fully charged.
7. Support low power detection, daily inspection.

## Electrical Specifications

Operating voltage: 3.7V 500mA lithium battery (5V/1A micro USB charging port)  
Detecting distance: ≤9 meters  
Detecting angle: 115°  
Power consumption: max current ≤ 90mA, standby current: ≤ 20μA.  
Wi-Fi: 2.4G frequency support, 802.11 a / b / g / n  
Working temperature: -20~50 °C

- 2 -

Working humidity: 10%~95% RH  
Installation way: wall-mounted / ceiling-mounted  
Anti-white light interference: ≥8000LUX  
Application environment: indoor

## Installation and Test

Note: Make sure the APP configuration is completed before installation.

1. Choose the right installation position, usually at the building entrance, corridor, etc.
2. The best installation height is from 1.8 to 2.2 meters to avoid alarms caused by small animals' movements.
3. Turn on the switch by pushing the button of the device to the "on" status, the red LED will be on and the sensor warms up for 30 seconds until the LED goes out. Configure the Wi-Fi network, the red LED will be on for 1 second after triggering the alarm, the APP interface displays an alarm information at the same time. It needs to wait for 30 seconds to be triggered again. If the Wi-Fi configuration is failed, the infrared triggering interval is 8 seconds.
4. Install the motion sensor on the wall, the angle is adjustable.
5. When the battery power is low, the APP interface will display low battery, please charge it in time. When the blue indicator is off, the charging is finished.

## Precautions

1. It is not advisable to install it by facing to the glass doors and windows, in order to prevent white light interference.
2. It is not advisable to install it face to the large objects that moves frequently, it will cause the changes of the infrared rays and lead to false alarm.
3. It is not advisable to install it face to the hot and cold vents, it will cause the changes of the infrared rays and lead to false alarms;
4. The detection area should not have any obstacles.

- 3 -

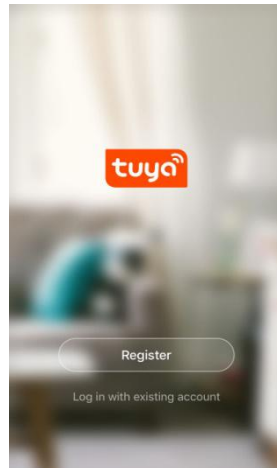
## APP instruction

1. Download "smart life" APP

Search "smart life" in application market to download and install the App.

## 2. Registration

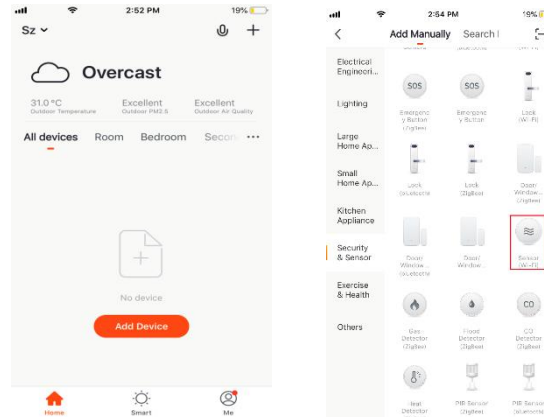
Click the APP and register an account according to the wizard.



- 4 -

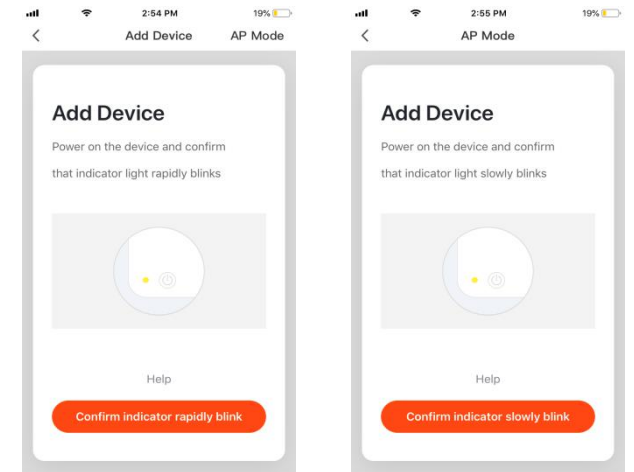
## 3. Add or delete devices

Click the APP and log in, click Add Device --> Security Sensor --> Sensor (Wi-Fi)



Turn on the battery switch, press the "RESET" button side of the base of the device and hold on for 5 seconds to enter into the Wi-Fi configuration state (the red indicator on the front flashes fast indicates that it is in the smart link configuration mode. If the indicator light flashes slowly, it indicates the AP configuration mode). The APP interface displays two modes which can be switched to each other before configuration start. As below:

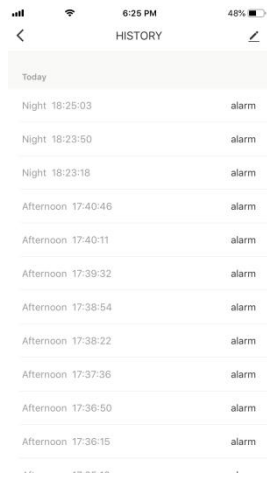
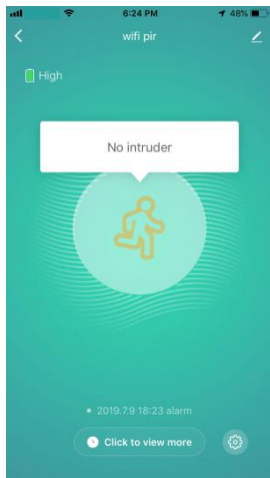
- 5 -



Input the Wi-Fi SSID and password according to the APP prompt and start connection, wait about 60 seconds to complete the device's network configuration and its connection to the Tuya cloud server, synchronization with the APP. It will jump to the APP operation and monitoring interface directly when the device is added completely.

You can modify the device name or share the device to other people on the APP directly. The device operation interface can see its status, alarm, offline and alarm release, etc., check history records and other setting options.

- 6 -

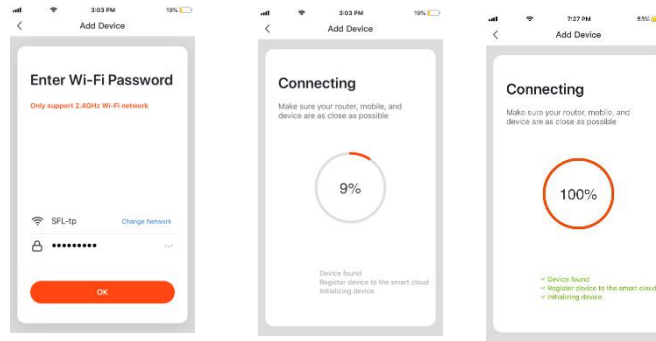


**Remarks:**

Ensure the device and APP work under the same Wi-Fi network to make sure the validity of the device which is set through SMART LINK or AP mode, then the device information recognized by the APP is valid. When the SMART LINK mode does not work due to Wi-Fi network configuration, use AP mode to configure the device and APP.

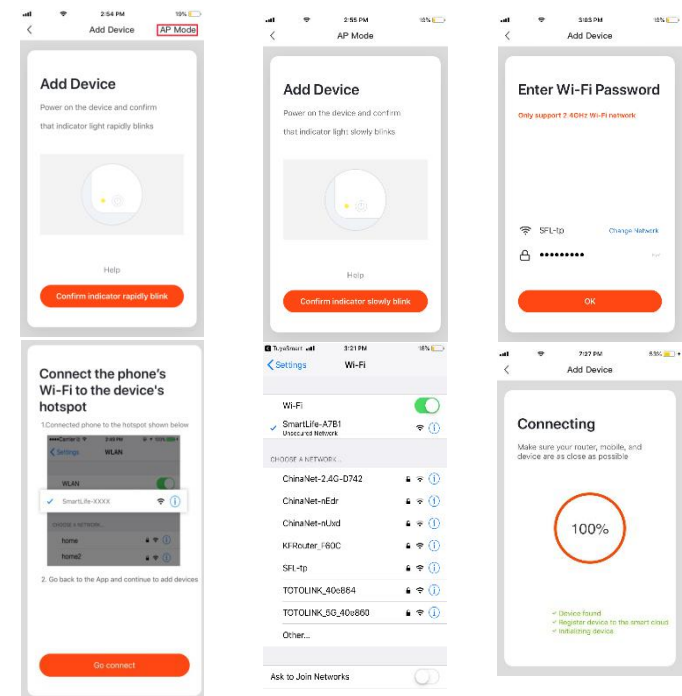
**Smart Link mode**

When configuring in SMART LINK mode, make sure that the Wi-Fi network connect to the Internet normally, then ensure the APP and the device work in the same Wi-Fi network. Input the SSID and password to connect the device with cloud server to accomplish the configuration. If need different Wi-Fi network, use "Change network" through the APP.



**AP mode**

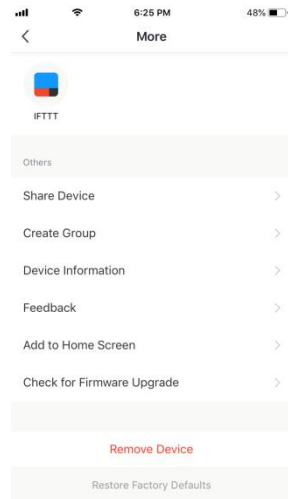
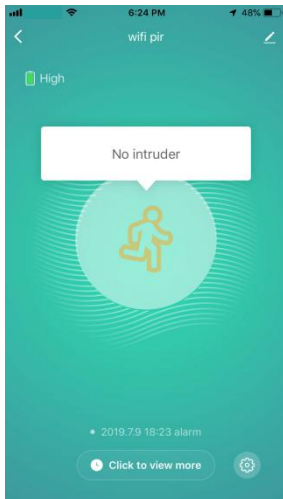
When configuring in AP mode, make sure that the Wi-Fi network connected to the Internet normally, then ensure the APP and the device work in the same Wi-Fi network. Input the SSID and password to run the APP (mobile or tablet) by connecting to the Wi-Fi network "SmartLife-xxxx" in the AP mode ("select by the Wi-Fi Network list), return to the APP when connected successfully, it will complete configuration automatically.



When the device is added to the Tuya smart user account, the indicating light will be off, the APP will jump to the operation interface, indicates that the device is added successfully. If not succeed, repeat the steps until it is added successfully.

**Delete device**

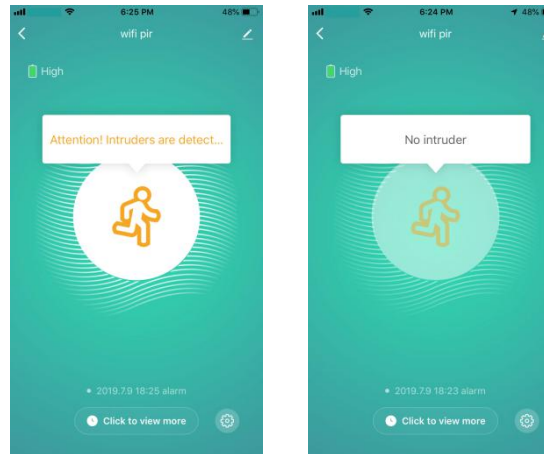
Select the "Edit" icon to enter into the operation interface of the device. Click "Remove device" to delete it.



**PIR detection alarm**

When the PIR sensor is triggered, the alarm data will be delivered to the cloud server, the cloud server will transmit the alarm information to the APP simultaneously.

The APP interface displays as below:



**Other operations**

Other operations of the device and APP, please pay attention to the design and updates of the APP and the device.

**Detection area**

