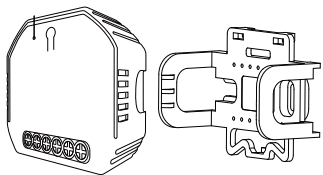


Instruction Manual Smart Curtain Switch Module



English

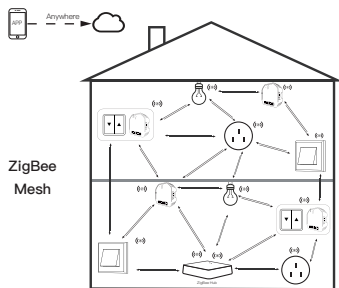


- Bitte scannen Sie den QR-Code, um das deutsche Handbuch, das Installationsvideo und die Funktionseinführung zu erhalten
- Escanee el código QR para obtener el manual en español, el video de instalación y la introducción de la función
- Veuillez scanner le code QR pour obtenir le manuel en français, la vidéo d'installation et l'introduction des fonctions
- Отсканируйте QR-код, чтобы получить руководство на русском языке, видео по установке и описание функций
- Leia o código QR para obter o manual em português, o vídeo de instalação e a introdução das funções



请扫描二维码获取中文说明书、安装视频及功能介绍

Global International operation Whenever & Wherever
You are, All-in-one Mobile App

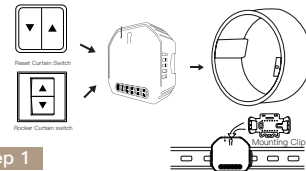


ZigBee
Mesh

Inhouse local operation



Note: Press the traditional curtain switch once after switch to up/down (any button on the switch) to stop the curtains (connect your switch to the curtain module first).



Step 1

- Turn off the circuit breaker and use the electrical tester to test the power.
- Ensure the circuit breaker is off before wiring.



⚠ Attention:

Please disconnect the power supply before installing or removing the device for avoiding irreversible damage on the device from the electric current or some unpredictable problems such as lamp flashing.

1

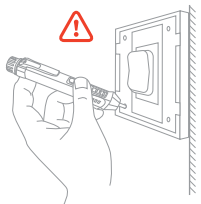
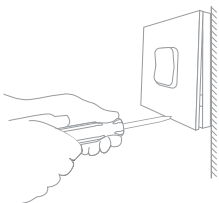
2

3

4

Step 2

- Remove the old switch



5

Step 3

- Remove the switch and pull it away from the wall. Identify Line/Load Wire (Note: The color of your wire may be different from the color shown on the manual.)

⚠ Verify power is off

- We recommend you remove the faceplate from the old switch and use an electrical tester to test all wires connected to the switch to ensure there is no voltage in the circuit.
- You may need to turn off more than one circuit breaker.

INSTALLATION

⚠ Warnings:

1. Installation must be carried out by a qualified electrician in accordance with local regulations.
2. Keep the device out of the reach of children.
3. Keep the device away from water, damp or hot environment.
4. Install the device away from strong signal sources such as microwave oven that may cause signal interruption resulted in abnormal operation of the device.
5. Obstruction by concrete wall or metallic materials may reduce the effective operation range of the device and should be avoided.
6. Do NOT attempt to disassemble, repair or modify the device.

6

TECHNICAL SPECIFICATIONS

Product Type	ZigBee+RF Curtain Module
Voltage	90~250V AC 50/60Hz
Current	2A
Max. Power	500W(250V)
Wireless Protocol	ZigBee 3.0
Operation Temp.	-10°C - +40°C
Case Temp.	Tc: +80°C (Max.)
Operation Range	≤ 200 m
Dims (WxDxH)	52x47x18 mm
IP Rating	IP20

EMC Standard (EMC)

EN 300 328 V2.1.1 (2016-11),
EN 301489-1 V2.1.1 (2017-02),
EN 301489-17 V3.1.1 (2017-02),
EN 62311:2008, EN 55015:2013
+A1:2015, EN 61547:2009

Safety Standard (LVD)

IEC 60669-2-1:2002/AMD1:2008/
AMD2:2015, IEC 60669-1:1998/
AMD1:1999/AMD2:2006,
EN 60669-2-1:2004+A1: 2009+ A2:2010,
EN 60669-1:2018

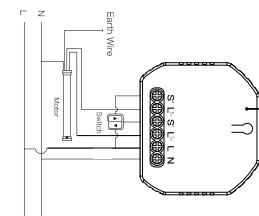
RoHS Standard (RoHS)

2011/65/EU, (EU) 2015/683

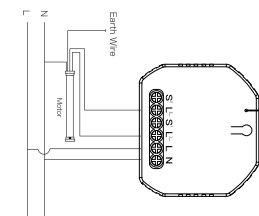
7

WIRING DIAGRAM

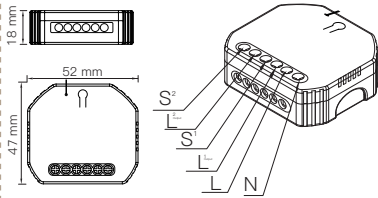
1. With curtain switch



2. Without switch



8



Wiring Instructions and Diagrams

1. Turn off the power supply before carrying out any electrical installation work.
2. Connect wires according to the wiring diagram.
3. Insert the module into the junction box.
4. Connect the power supply and follow curtain switch module configuration instructions.

Notes: Put your smartphone close to the curtain switch module when you're configuring, and make sure you have min. 50% Wi-Fi signal.

9

English

English

10

FAQ

- Q1: Does this work with Google Home?
A: Yes, it does. And it's also compatible with Alexa.
- Q2: Do I need to buy a hub to work with the curtain module?
A: Yes, there is need for you to buy a Tuya ZigBee hub
- Q3: Can I control the module with my own remote controller?
A: This curtain switch module (MS-108ZR) is RF433 built in and it can only work with RF433 remote control switch with encoding 1527.
- Q4: Shall I buy a smart curtain switch to work with this module?
A: No, you can just connect the module to your traditional curtain switch to realize intelligence.
- Q5: What should I do if I can't configure the curtain module?
A: a: Please check whether device is powered on.
b: Make sure your mobile and curtain module are under the same 2.4GHz wifi network.
c: Whether it's in good internet conditions.
d: Make sure the password entered in App is correct.
e: Make sure the wiring is correct.
- Q6: Which products can I control with the device?
A: Curtains, shutter, blind,...
- Q7: What happens if the wifi goes off?
A: You can still control the device connected to the curtain module with your traditional curtain switch and once wifi is active again the device connected to the curtain module will connect automatically to your wifi network.
- Q8: What should I do if I change the wifi network or change the password?
A: You can connect the module to the wifi network according to the App User Manual.

MANUAL OVERRIDE

The curtain switch module terminal reserves the access of manual override function for the end-user to switch on/off.

- Switch on/off for permanent on/off function.

Notes:

- 1) Both the adjustment on App and switch can be reset , the last adjustment remains in memory.
- 2) The App control is synchronized with the manual switch.

APP USER MANUAL



1

iOS App / Android App

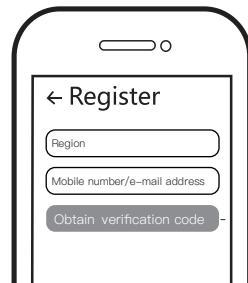
Scan the QR code to download Smart Life App, or you can also search keyword "Smart Life" at App Store or Googleplay to download App.

11

English

English

12

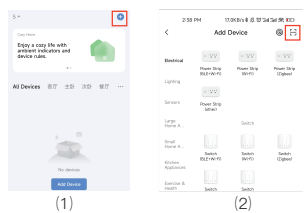


2

Log in or register your account with your mobile number or e-mail address. Type in the verification code sent to your mobile or mail box, then set your login password. Click "Create Family" to enter into the App.

Method 1

Scan the QR code to configure the network guide.



(1)

(2)



Scan the QR code



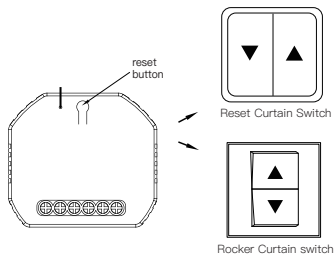
Please connect the device according to the configuration process.

13

English

English

14



Method 2

ZigBee link method:

Pair with traditional pairing method.

Press the reset button for more than 7 seconds until the beep sounds continuously rapidly as Di-Di-Di... for entering into ZigBee pairing mode.

3

Open the App, select "+" on top right, choose "Switch (Zigbee)" to add device. And select the right Gateway to confirm the connection.

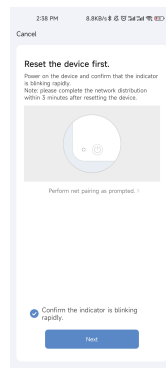
Note: Make sure you have successfully connected one Zigbee gateway hub.

15

English

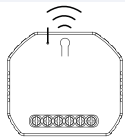
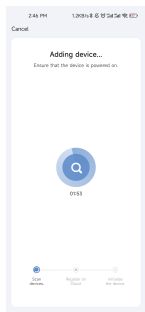
English

16



4

Make sure your smart phone and ZigBee switch module are under the same WiFi network at 2.4 GHz connection. Confirm when the beep sounds continuously rapidly (twice a second).



Added successfully



5

The connecting will take about 10–120 seconds to complete depending on your network condition.

17

English

English

18

Enter Smart Life Skill in Alexa APP

1. Complete product networking configuration in the App

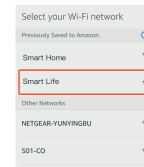
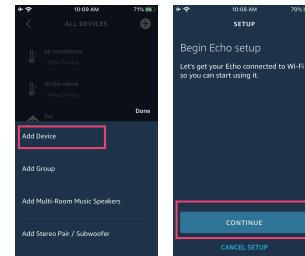
Complete the device's networking configuration according to the prompts in the App.
Note: In the App, change the name of the device to an easily identifiable name such as Alexa; names are usually in English, such as "bed light".

2. Configure the Amazon Echo device

(If you have already configured Amazon Echo, you can skip this step. The following instructions are based on the iOS client.)

- Make sure your Amazon Echo device is powered on and connected to a Wi-Fi network.
- Open the Alexa App on your phone. After successful login, tap on the menu in the upper left corner of the Home page, select "Settings" and tap "Set Up A New Device" to set up the Amazon Echo.
- Choose your Amazon Echo device type and language for connecting. Press and hold the small dot on the device until the light turns yellow. Then tap "Continue" to connect to the hotspot.

• After connecting to the Amazon Echo hotspot, return to the page. At this point, the connection is successful.



6

When pairing is done, the Zigbee switch will be shown on the App.

19

English

English

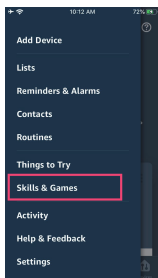
20

Tap "Continue" to proceed to the next step. Choose a Wi-Fi network to connect to. Amazon Echo will take a few minutes to try to connect to the network.

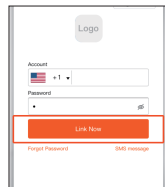
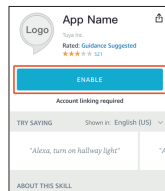
• After the network connection is successful, tap "Continue". An introduction video will appear. After the video ends, tap "Continue" to jump to the Alexa Home page. You have now completed the Amazon Echo's configuration process.

3. Key step — Link Skill

• Tap on "Skill" in the Alexa App menu.



- Then search for "App Name". Tap "Enable" to enable the Skill.
- Enter the App account and password, then tap "Link Now" to link your App account to enable the Skill. Now you can start your smart home journey.



4. Common commands

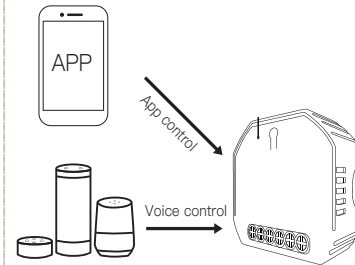
Control the device via voice commands, now you can control your smart device with Echo. You can control your device (such as your bedroom light) with the following commands:

Alexa, turn on/off bedroom light. (Turn on/off the light)

Alexa, set bedroom light to 50 percent. (Set the light to any brightness)

Alexa, brighten/dim bedroom light. (Increase/weaken the brightness of the light)

Alexa, set bedroom light to green. (Adjust the color of the light)



Enjoy your smart life of home automation for intelligent control by using our All-in-one mobile App wherever you are in the world or simply by voice control when you are sitting at home comfortably.

21

English

English

22

23

English

English

24

RF Link Method

- 1 Press the reset button for 5 times and wait for 2 seconds until the red indicator flashes fast to pair with the open button.
- 2 Press the reset button for 6 times and wait for 2 seconds until the red indicator flashes fast to pair with the close button.
- 3 Press the reset button for 7 times and wait for 2 seconds until the red indicator flashes fast to pair with the stop button.

Reset Method

- 1 Press the reset button for more than 7 seconds to start to reset of Wi-Fi method.
- 2 Press the reset button for 10 times for clearing mode of RF.

SERVICE

1. During the free warranty period, if the product breaks down during normal use, we will offer free maintenance for the product.
2. Natural disasters/man-made equipment failures, disassembly and repair without the permission of our company, no warranty card, products beyond the free warranty period, etc., are not within the scope of free warranty.
3. Any commitment (oral or written) made by the third party (including the dealer/service provider) to the user beyond the warranty scope shall be executed by the third party.
4. Please keep this warranty card to ensure your rights.
5. Our company may update or change the products without notice. Please refer to the official website for the updates.

RECYCLING INFORMATION

All products marked with the symbol for separate collection of waste electrical and electronic equipment (WEEE Directive 2012/19 / EU) must be disposed of separately from unsorted municipal waste. To protect your health and the environment, this equipment must be disposed of at designated collection points for electrical and electronic equipment designated by the government or local authorities.



Correct disposal and recycling will help prevent potential negative consequences for the environment and human health. To find out where these collection points are and how they work, contact the installer or your local authority.

WARRANTY CARD

Product Information

Product Name _____
Product Type _____
Purchase Date _____
Warranty Period _____
Dealer Information _____
Customer's Name _____
Customer Phone _____
Customer Address _____

Maintenance Records

Failure date	Cause Of Issue	Fault Content	Principal

25

English

English

26

27

English

English

28

Thank you for your support and purchase at we Moes, we are always here for your complete satisfaction, just feel free to share your great shopping experience with us.



If you have any other need, please do not hesitate to contact us first, we will try to meet your demand.

FOLLOW US

- @moessmart MOES.Official
 @moes_smart @moes_smart
 @moes_smart www.moeshouse.com



WENZHOU NOVA NEW ENERGY CO.,LTD

Address: Power Science and Technology
Innovation Center, NO.238, Wei 11 Road,
Yueqing Economic Development Zone,
Yueqing, Zhejiang, China

Tel:+86-577-57186815

Email:service@moeshouse.com



AMZLAB GmbH

Laubenhof 23, 45326 Essen

Made In China

BB14

29

English

English

30

31

English

English

32