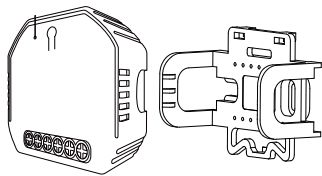


Instruction Manual Smart Curtain Switch Module



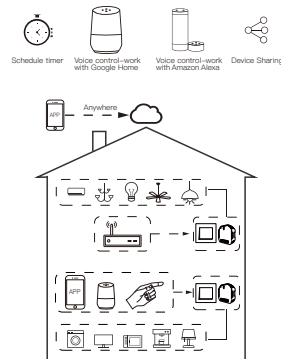
MS-108: Wi-Fi
MS-108WR: Wi-Fi+RF433

English



- Bitte scannen Sie den QR-Code hier für eine Anleitung in deutscher Sprache
- Por favor escanear el código QR aquí para instrucciones en español
- Veuillez scanner le QR code ici pour des instructions en français
- Пожалуйста, отсканируйте QR-код здесь, чтобы получить инструкции на русском языке.
- Leia o código QR aqui para obter instruções em português

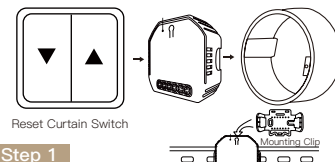
Global international operation Whenever & Wherever
You are, All-in-one Mobile App



Inhouse local operation



Note: Press the traditional curtain switch once after switch to up/down (on the same button) to stop the curtains (connect your switch to the curtain module first).



Step 1

- Turn off the circuit breaker and use the electrical tester to test the power.
- Ensure the circuit breaker is off before wiring.



⚠ Attention:

Please disconnect the power supply before installing or removing the device for avoiding irreversible damage on the device from the electric current or some unpredictable problems such as lamp flashing.

1

English

2

3

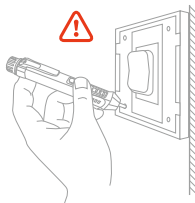
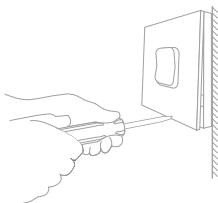
English

English

4

Step 2

- Remove the old switch



5

English

Step 3

- Remove the switch and pull it away from the wall. Identify Line/Load Wire (Note: The color of your wire may be different from the color shown on the manual.)

⚠ Verify power is off

- We recommend you remove the faceplate from the old switch and use an electrical tester to test all wires connected to the switch to ensure there is no voltage in the circuit.
- You may need to turn off more than one circuit breaker.

INSTALLATION

⚠ Warnings:

1. Installation must be carried out by a qualified electrician in accordance with local regulations.
2. Keep the device out of the reach of children.
3. Keep the device away from water, damp or hot environment.
4. Install the device away from strong signal sources such as microwave oven that may cause signal interruption resulted in abnormal operation of the device.
5. Obstruction by concrete wall or metallic materials may reduce the effective operation range of the device and should be avoided.
6. Do NOT attempt to disassemble, repair or modify the device.

6

English

TECHNICAL SPECIFICATIONS

Product Type	Smart Curtain Switch Module
Voltage	90~250V AC 50/60Hz
Current	2A
Max. Power	500W(250V)
Wireless Protocol	Wi-Fi 2.4GHz IEEE 802.11 b/g/n
Operation Temp.	-10°C ~ +40°C
Case Temp.	Tc: +80°C (Max.)
Operation Range	≤ 200 m
Dims (WxDxH)	52x47x18 mm
IP Rating	IP20

EMC Standard (EMC)

EN 300 328 V2.1.1 (2016-11),
EN 301489-1 V2.1.1 (2017-02),
EN 301489-17 V3.1.1 (2017-02),
EN 62311: 2008, EN 55015:2013
+A1:2015, EN 61547:2009

Safety Standard (LVDT)

IEC 60669-2-1:2002/AMD1:2008/
AMD2:2015, IEC 60669-1:1998/
AMD1:1999/AMD2:2006,
EN 60669-2-1:2004+A1: 2009+ A2:2010,
EN 60669-1:2018

RoHS Standard (RoHS)

2011/65/EU, (EU) 2015/683

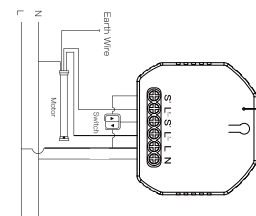
7

English

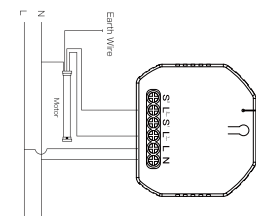
English

WIRING DIAGRAM

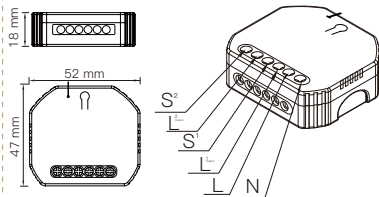
1. With curtain switch



2. Without switch



8



Wiring Instructions and Diagrams

1. Turn off the power supply before carrying out any electrical installation work.
2. Connect wires according to the wiring diagram.
3. Insert the module into the junction box.
4. Connect the power supply and follow curtain switch module configuration instructions.

Notes: Put your smartphone close to the curtain switch module when you're configuring, and make sure you have min. 50% Wi-Fi signal.

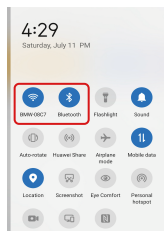
9

English

3 Wi-Fi link method:(two pairing methods) Complete the wiring of the switch module before pairing

3.1 Method one:Pair and clear up the WiFi code with Bluetooth and WiFi connected meantime.(New Updated)

1. Make sure your phone is connected to Wi-Fi and Bluetooth.



2. Open Smart Life/Tuya App and Click "+" , then the prompt page will automatically show on the screen. Click "Go to add".

13

English

FAQ

Q1: Does this work with Google Home?

A: Yes, it does. And it's also compatible with Alexa.

Q2: Do I need to buy a hub to work with the curtain module?

A: No, there is no need for you to buy a hub and no hub required for the module.

Q3: Can I control the module with my own remote controller?

A: This curtain switch module (MS-108WR) is RF433 built in and it can only work with RF433 remote control switch with encoding 1527.

Q4: Shall I buy a smart curtain switch to work with this module?

A: No, you can just connect the module to your traditional curtain switch to realize intelligence.

Q5: What should I do if I can't configure the curtain module?

- a. Please check whether device is powered on.
- b. Make sure your mobile and curtain module are under the same 2.4GHz wifi network.
- c. Whether it's in good internet conditions.
- d. Make sure the password entered in App is correct.
- e. Make sure the wiring is correct.

Q6: Which products can I control with the device?

A: Curtains, shutter, blind, ...

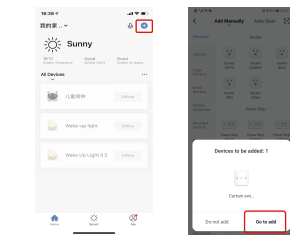
Q7: What happens if the wifi goes off?

A: You can still control the device connected to the curtain module with your traditional curtain switch and once wifi is active again the device connected to the curtain module will connect automatically to your wifi network.

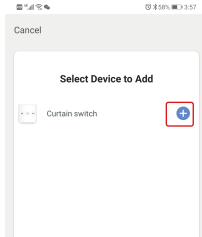
Q8: What should I do if I change the wifi network or change the password?

A: You can connect the module to the wifi network according to the App User Manual.

10



3. Select the device you want to add and click "+"



14

English

MANUAL OVERRIDE

The curtain switch module terminal reserves the access of manual override function for the end-user to switch on/off.

- Switch on/off for permanent on/off function.

Notes:

- 1) Both the adjustment on App and switch can be reset, the last adjustment remains in memory.
- 2) The App control is synchronized with the manual switch.

APP USER MANUAL



1

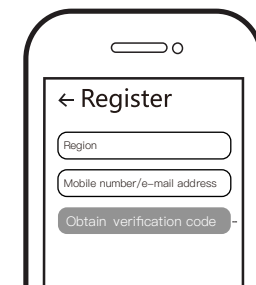
iOS App / Android App

Scan the QR code to download Smart Life App, or you can also search keyword "Smart Life" at App Store or Googleplay to download App.

11

English

Wi-Fi link method for MS-108/MS-108WR



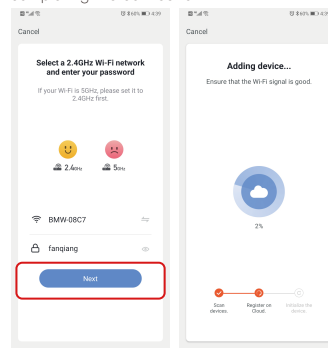
2

Log in or register your account with your mobile number or e-mail address. Type in the verification code sent to your mobile or mail box, then set your login password. Click "Create Family" to enter into the App.

12

English

4. Enter Wi-Fi Password and click "Next", waiting for completing the connection.

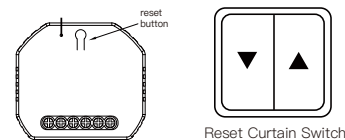


5. Add the device successfully, you can edit the name of the device to enter the device page by click "Done"

15

English

- 3.2 Method two: Pair with traditional pairing method. Press the reset button for more than 7 seconds until the beep sounds continuously rapidly as Di-Di-Di... for entering into Wi-Fi pairing mode.



4

Open the App, select "+" on top right and choose "Switch (Wi-Fi)" to add device.

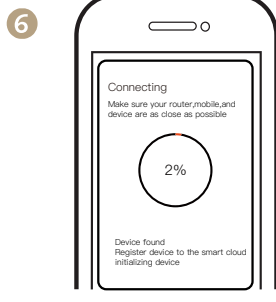
16

English



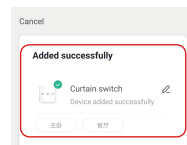
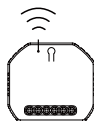
5

Make sure your smart phone and WiFi switch module are under the same WiFi network at 2.4 GHz connection. Confirm when the light blinks rapidly (twice a second).



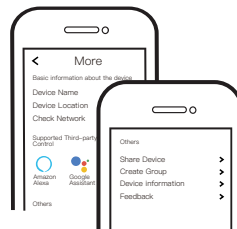
6

The connecting will take about 10-120 seconds to complete depending on your network condition.



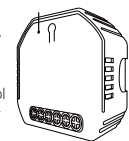
7

When pairing is done, the WiFi switch will be shown on the App.



8

Connect to Amazon Alexa or Google Assistant for voice control, or share the devices with your families or friends.



9

Enjoy your smart life of home automation for intelligent control by using our All-in-one mobile App wherever you are in the world or simply by voice control when you are sitting at home comfortably.

RF Link Method (only for MS-108WR)

1. Press the reset button for 5 times and wait for 2 seconds until the red indicator flashes fast to pair with the open button.
2. Press the reset button for 6 times and wait for 2 seconds until the red indicator flashes fast to pair with the close button.
3. Press the reset button for 7 times and wait for 2 seconds until the red indicator flashes fast to pair with the stop button.

Reset Method

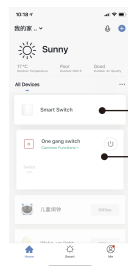
1. Press the reset button for more than 7 seconds to start to reset of Wi-Fi method.
2. Press the reset button for 10 times for clearing mode of RF.

How to achieve multi-control association

Note: Please confirm you have successfully finished the WiFi link method above for adding this switch to your Smart Life App before the association.

1. WiFi add another smart switch to the same Smart Life/Tuya App. (If there is a smart switch having been added before to the app, just go to next step.)

Note: There is no need to wire the new added switch to the light, only L and N are required for wiring.

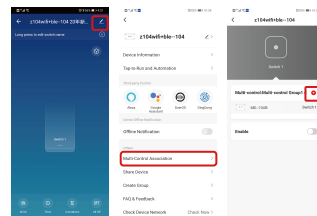


New Added Switch

Main Switch

2. Then you will see two devices in the app and click the main switch (as One gang switch as below) by entering into the next operation.

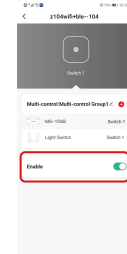
3. Click the '+' in the upper right corner and choose 'Multi-Control Association', and then click '+' in the right corner.



4. Choose the switch that you want to associate to and then choose the switch button that you want to control the same light.

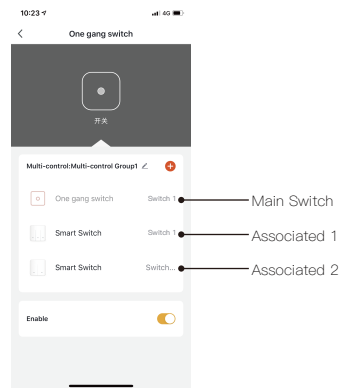
5. Then go back to previous page, you will see two items in the page, one is your main switch, the other is the one you associate just now.

Note: Please confirm the associated switch is enabled.



6. Now you are able to control your light with two switches. Do not associate another button in the same switch for multi-control.

7.If you want to add another third or more smart switches to control your light,just repeat the steps above.And you will see the result as below when you associate another new switch.



25

English

English

26

SERVICE

- 1.During the free warranty period, if the product breaks down during normal use, we will offer free maintenance for the product.
- 2.Natural disasters/man-made equipment failures, disassembly and repair without the permission of our company, no warranty card, products beyond the free warranty period, etc., are not within the scope of free warranty
- 3.Any commitment (oral or written) made by the third party (including the dealer/service provider) to the user beyond the warranty scope shall be executed by the third party
- 4.Please keep this warranty card to ensure your rights
- 5.Our company may update or change the products without notice. Please refer to the official website for the updates.

RECYCLING INFORMATION

All products marked with the symbol for separate collection of waste electrical and electronic equipment (WEEE Directive 2012/19 / EU) must be disposed of separately from unsorted municipal waste. To protect your health and the environment, this equipment must be disposed of at designated collection points for electrical and electronic equipment designated by the government or local authorities.

Correct disposal and recycling will help prevent potential negative consequences for the environment and human health. To find out where these collection points are and how they work, contact the installer or your local authority.



27

English

WARRANTY CARD

Product Information

Product Name _____
 Product Type _____
 Purchase Date _____
 Warranty Period _____
 Dealer Information _____
 Customer's Name _____
 Customer Phone _____
 Customer Address _____

Maintenance Records

Failure date	Cause Of Issue	Fault Content	Principal

28

Thank you for your support and purchase at we Moes,we are always here for your complete satisfaction,just feel free to share your great shopping experience with us.



If you have any other need,please do not hesitate to contact us first,we will try to meet your demand.

FOLLOW US



@moessmart



moes



@moes_smart



@moes_smart



@moes_smart



www.moes.net



WENZHOU NOVA NEW ENERGY CO.,LTD

Address: Power Science and Technology
 Innovation Center, NO.238, Wei 11 Road,
 Yueqing Economic Development Zone,
 Yueqing, Zhejiang, China
 Tel:+86-577-57186815
 Email:service@moeshouse.com



AMZLAB GmbH

Laubenhof 23, 45326 Essen

Made In China

ANJ21

29

English

English

30

31

English

English

32