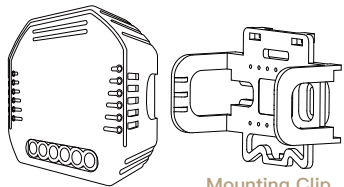


Instruction Manual

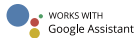
Smart Dimmer Module

WiFi 2 Gang MS-105B



Mounting Clip

English

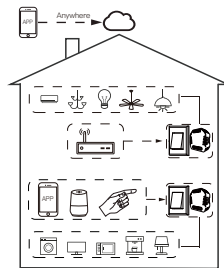


1

- Bitte scannen Sie den QR-Code, um das deutsche Handbuch, das Installationsvideo und die Funktionseinführung zu erhalten
- Escanee el código QR para obtener el manual en español, el video de instalación y la introducción de la función
- Veuillez scanner le code QR pour obtenir le manuel en français, la vidéo d'installation et l'introduction des fonctions
- Отсканируйте QR-код, чтобы получить руководство на русском языке, видео по установке и описание функций
- Leia o código QR para obter o manual em português, o video de instalação e a introdução das funções



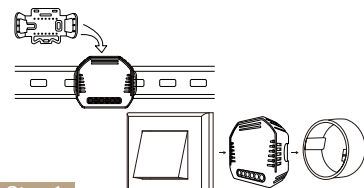
Global international operation Whenever & Wherever You are, All-in-one Mobile App



Inhouse local operation



English



Step 1

- Turn off the circuit breaker and use the electrical tester to test the power.
- Ensure the circuit breaker is off before wiring.



⚠ Attention:

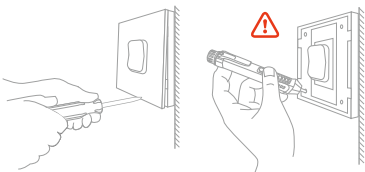
Please disconnect the power supply before installing or removing the device for avoiding irreversible damage on the device from the electric current or some unpredictable problems such as lamp flashing.

English

4

Step 2

- Remove the old switch



Step 3

- Remove the switch and pull it away from the wall. Identify Line/Load Wire(Note:The color of your wire may be different from the color shown on the manual.)

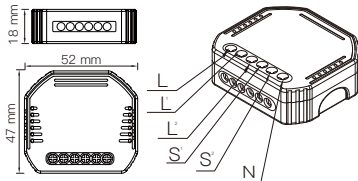
⚠ Verify power is off

- We recommend you remove the faceplate from the old switch and use an electrical tester to test all wires connected to the switch to ensure there is no voltage in the circuit.
- You may need to turn off more than one circuit breaker.

INSTALLATION

⚠ Warnings:

1. Installation must be carried out by a qualified electrician in accordance with local regulations.
2. Keep the device out of the reach of children.
3. Keep the device away from water, damp or hot environment.
4. Install the device away from strong signal sources such as microwave oven that may cause signal interruption resulted in abnormal operation of the device.
5. Obstruction by concrete wall or metallic materials may reduce the effective operation range of the device and should be avoided.
6. Do NOT attempt to disassemble, repair or modify the device.



English

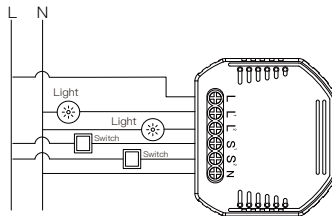
6

TECHNICAL SPECIFICATIONS

Product type	Smart Dimmer Module
Voltage	90-250V AC
Max Power	2*50W 110V / 2*100W 220V
Wireless Protocol	Wi-Fi 2.4GHz IEEE 802.11 b/g/n
Operation temp.	-10°C - +40°C
Case temp.	Tc: +80°C (Max.)
Operation range	≤ 200 m
Dims (WxDxH)	52x47x18 mm
IP rating	IP20

WIRING DIAGRAM

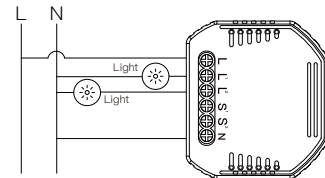
1. With two 1 Gang switch



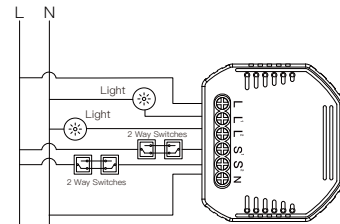
English

7

2. Without switch



3. With 2 Way switches



English

8

Wiring Instructions and Diagrams

1. Turn off the power supply before carrying out any electrical installation work.
2. Connect wires according to the wiring diagram.
3. Insert the module into the junction box.
4. Connect the power supply and follow switch module configuration instructions.

Notes: Put your smartphone close to the switch module when you're configuring, and make sure you have min. 50% Wi-Fi signal.

FAQ

- Q1: What should I do if I can't configure the switch module?
- a. Please check whether device is powered on.
 - b. Make sure your mobile and switch module are under the same 2.4 GHz WiFi network.
 - c. Whether it's in good internet conditions.
 - d. Make sure the password entered in App is correct.
 - e. Make sure the wiring is correct.

Q2: What device can be connected to this WiFi switch module?

Most of your household electrical appliances can be, such as lamps, laundry machine, coffee maker, etc.

Q3: What happens if the WiFi goes off?

You can still control the device connected to the switch module with your traditional switch and once WiFi is active again the device connected to module will connect automatically to your WiFi network.

Q4: What should I do if I change the WiFi network or change the password?

You have to re-connect our WiFi switch module to the new WiFi network according to the App User Manual.

Q5: How do I reset the device?

Power on/off device 10 times until the beeper on the module sounds continuously.

MANUAL OVERRIDE

The switch module terminal reserves the access of manual override function for the end-user to switch on/off.

- Switch on/off for permanent on/off function.

Notes:

- 1) Both the adjustment on App and switch can be reset, the last adjustment remains in memory.
- 2) The App control is synchronized with the manual switch.

APP USER MANUAL



1 iOS App / Android App

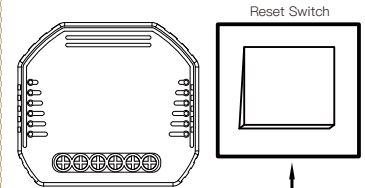
1

Scan the QR code to download Smart Life App, or you can also search keyword "Smart Life" at App Store or Googleplay to download App.



2

Log in or register your account with your mobile number or e-mail address. Type in the verification code sent to your mobile or mail box, then set your login password. Click "Create Family" to enter into the App.



Note: This smart switch module can only be used with reset switch.

3

Pair and clear up the WiFi code with phone Bluetooth on and WiFi connected meantime. (New Updated)

9

English

English

10

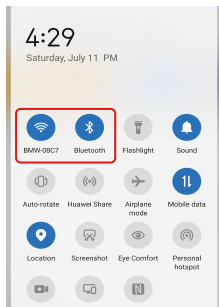
11

English

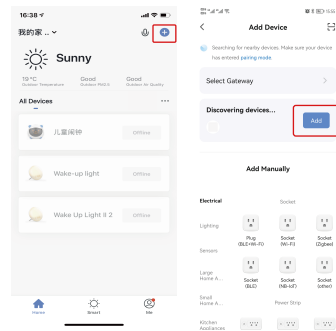
English

12

1. Make sure your phone is connected to Wi-Fi and phone Bluetooth on.



2. Open Smart Life/Tuya App and Click "+", then the prompt page will automatically show on the screen. Click "Go to add".



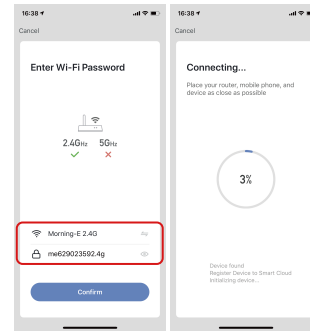
3. Select the device you want to add and click "+"

13

English

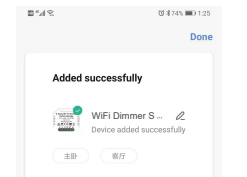
English

14

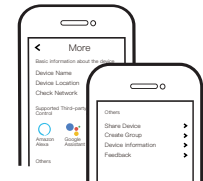


4

Add the device successfully, you can edit the name of the device to enter the device page by click "Done"



5



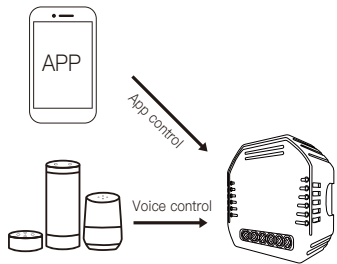
Connect to Amazon Alexa or Google Assistant for voice control, or share the devices with your families or friends.

15

English

English

16



6

Enjoy your smart life of home automation for lighting control by using our All-in-one mobile App wherever you are in the world or simply by voice control when you are sitting at home comfortably.

SERVICE

1. During the free warranty period, if the product breaks down during normal use, we will offer free maintenance for the product.
2. Natural disasters/man-made equipment failures, disassembly and repair without the permission of our company, no warranty card, products beyond the free warranty period, etc., are not within the scope of free warranty
3. Any commitment (oral or written) made by the third party (including the dealer/service provider) to the user beyond the warranty scope shall be executed by the third party
4. Please keep this warranty card to ensure your rights
5. Our company may update or change the products without notice. Please refer to the official website for the updates.

RECYCLING INFORMATION

All products marked with the symbol for separate collection of waste electrical and electronic equipment (WEEE Directive 2012/19 / EU) must be disposed of separately from unsorted municipal waste. To protect your health and the environment, this equipment must be disposed of at designated collection points for electrical and electronic equipment designated by the government or local authorities. Correct disposal and recycling will help prevent potential negative consequences for the environment and human health. To find out where these collection points are and how they work, contact the installer or your local authority.



WARRANTY CARD

Product Information

Product Name _____
 Product Type _____
 Purchase Date _____
 Warranty Period _____
 Dealer Information _____
 Customer's Name _____
 Customer Phone _____
 Customer Address _____

Maintenance Records

Failure date	Cause Of Issue	Fault Content	Principal

17

English

English

18

Thank you for your support and purchase at we Moes, we are always here for your complete satisfaction, just feel free to share your great shopping experience with us.



If you have any other need, please do not hesitate to contact us first, we will try to meet your demand.

FOLLOW US

@moessmart
 moes
 @moes_smart
 @moes_smart
 @moes_smart
 www.moeshouse.com



WENZHOU NOVA NEW ENERGY CO.,LTD
 Address: Power Science and Technology
 Innovation Center, NO.238, Wei 11 Road,
 Yueqing Economic Development Zone,
 Yueqing, Zhejiang, China
 Tel:+86-577-57186815
 Email:service@moeshouse.com



AMZLAB GmbH
 Laubenhof 23, 45326 Essen
 Made In China

19

English

English

20

21

English

English

22

AL23

23

English

English

24