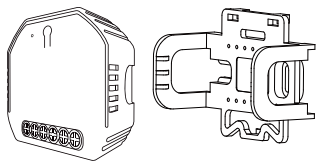


Instruction Manual

Smart Switch Module

ZigBee 2 Gang MS-104BZ



English



1

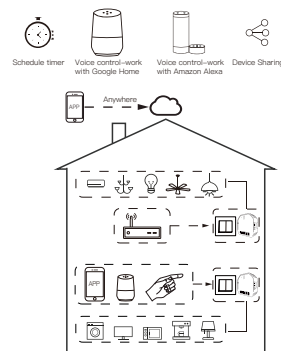


- Bitte scannen Sie den QR-Code, um das deutsche Handbuch, das Installationsvideo und die Funktionseinführung zu erhalten
- Escanee el código QR para obtener el manual en español, el video de instalación y la introducción de la función
- Veuillez scanner le code QR pour obtenir le manuel en français, la vidéo d'installation et l'introduction des fonctions
- Отсканируйте QR-код, чтобы получить руководство на русском языке, видео по установке и описание функций
- Leia o código QR para obter o manual em português, o vídeo de instalação e a introdução das funções

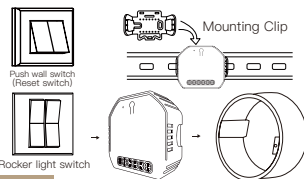
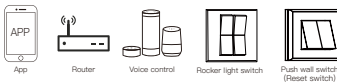
English

2

Global international operation Whenever & Wherever
You are, All-in-one Mobile App



Inhouse local operation



Step 1

- Turn off the circuit breaker and use the electrical tester to test the power.
- Ensure the circuit breaker is off before wiring.



⚠ Attention:

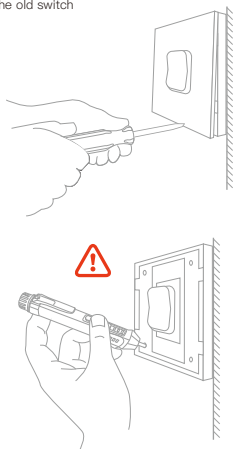
Please disconnect the power supply before installing or removing the device for avoiding irreversible damage on the device from the electric current or some unpredictable problems such as lamp flashing.

English

4

Step 2

- Remove the old switch



5

Step 3

- Remove the switch and pull it away from the wall. Identify Line/Load Wire (Note: The color of your wire may be different from the color shown on the manual.)

⚠ Verify power is off

- We recommend you remove the faceplate from the old switch and use an electrical tester to test all wires connected to the switch to ensure there is no voltage in the circuit.
- You may need to turn off more than one circuit breaker.

INSTALLATION

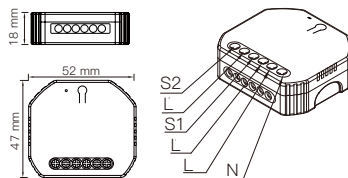
⚠ Warnings:

1. This is a ZigBee smart module switch that must be used under ZigBee gateway hub connected with ZigBee protocol.
2. Installation must be carried out by a qualified electrician in accordance with local regulations.
3. Keep the device out of the reach of children and away from water, damp or hot environment.
4. Install the device away from strong signal sources such as microwave oven that may cause signal interruption resulted in abnormal operation of the device.
5. Obstruction by concrete wall or metallic materials may reduce the effective operation range of the device and should be avoided.
6. Do NOT attempt to disassemble, repair or modify the device.

English

English

6

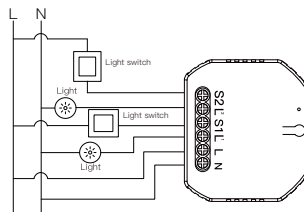


TECHNICAL SPECIFICATIONS

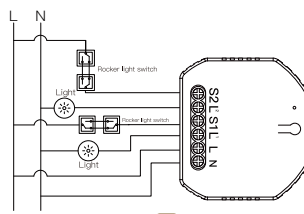
Product Type	Smart Switch Module
Voltage	90~250V AC 50/60Hz
Current	10A/Gang; Total 10A
Wireless Protocol	ZigBee 3.0
Operation Temp.	-10°C ~ +40°C
Case Temp.	Tc: +80°C (Max.)
Operation Range	≤200 m
Dims (WxDxH)	52x47x18 mm
IP Rating	IP20

WIRING DIAGRAM

1. With one 2 Gang switch



2. With 2 Gang 2 Way switches

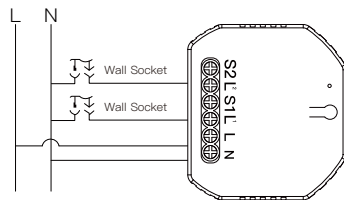


English

English

8

3. With 2 wall socket



Wiring Instructions and Diagrams

1. Turn off the power supply before carrying out any electrical installation work.
2. Connect wires according to the wiring diagram.
3. Insert the module into the junction box.
4. Connect the power supply and follow switch module configuration instructions.

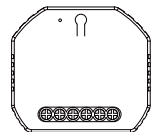
Notes: Put your smartphone close to the switch module when you're configuring, and make sure you have min. 50% Wi-Fi signal.

9

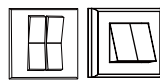
English

English

10



Fit for the two switches



Rocker switch Push wall switch (Reset switch)

3 Zigbee Link/Reset:

- a. For reset switch:** press the switch button for 10 times to hear the beep sounds continuously.
- b. For rocker light switch:** press the switch button for 20 times (ON/OFF cycle for 10 times) to hear the beep sounds continuously.
- c. For reset button:** long press the button on the module to hear the beep sounds as Di-Di (2 times) and long press the button again to hear the beep sounds continuously.

13

English

English

14

FAQ:

- Q1: What should I do if I can't configure the switch module?
- a. Please check whether device is powered on.
 - b. Make sure your mobile and ZigBee gateway hub are under the same 2.4GHz WiFi network.
 - c. Whether it's in good internet conditions.
 - d. Make sure the password entered in App is correct.
 - e. Make sure the wiring is correct.

Q2: What device can be connected to this ZigBee switch module?

Most of your household electrical appliances can be, such as lamps, laundry machine, coffee maker, etc.

Q3: What happens if the WiFi goes off?

You can still control the device connected to the switch module with your traditional switch and once WiFi is active again the devices connected to App will connect automatically for normal control.

Q4: What should I do if I change the WiFi network or change the password?

You have to re-connect your Zigbee gateway hub to the new WiFi network according to the App User Manual.

MANUAL OVERRIDE

The ZigBee switch module terminal reserves the access of manual override function for the end-user to switch on/off.

- Switch on/off for permanent on/off function.

Notes:

- 1) Both the adjustment on App and switch can be reset, the last adjustment remains in memory.
- 2) The App control is synchronized with the manual switch.

APP USER MANUAL



iOS App / Android App

1

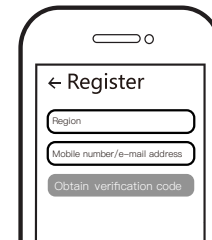
Scan the QR code to download Smart Life App, or you can also search keyword "Smart Life" in App Store or Googleplay to download App.

11

English

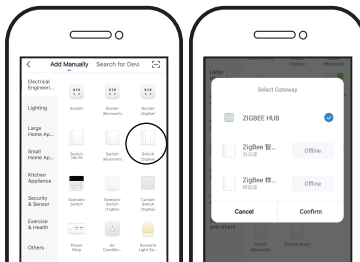
English

12



2

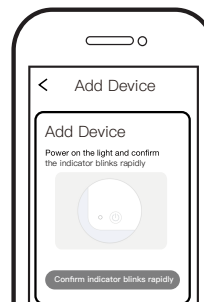
Log in or register your account with your mobile number or e-mail address. Type in the verification code sent to your mobile or mail box, then set your login password. Click "Create Family" to enter into the App.



4

Open the App, select "+" on top right, choose "Switch (ZigBee)" to add device. And select the right Gateway to confirm the connection.

Note: Make sure you have successfully connected one ZigBee gateway hub.



5

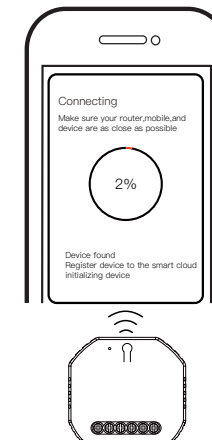
Confirm the ZigBee switch module is beeper rapidly. (twice a second).

15

English

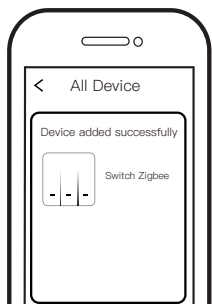
English

16



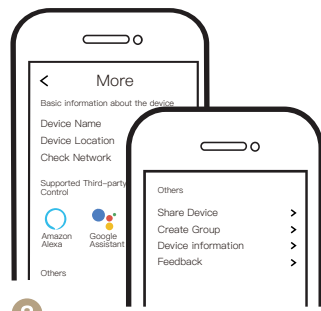
6

The connecting will take about 10-120 seconds to complete depending on your network condition.



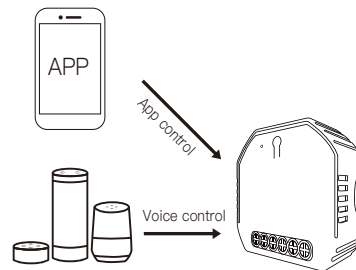
7

When pairing is done, the ZigBee switch will be shown on the App.



8

Connect to Amazon Alexa or Google Assistant for voice control, or share the devices with your families or friends.



9

Enjoy your smart life of home automation for lighting control by using our All-in-one mobile App wherever you are in the world or simply by voice control when you are sitting at home comfortably.

Pair and clear up the RF code
1. How to pair the RF code

1.1 For reset switch:press the switch for 5 times to hear the beep sounds as Di-Di(2 times) for successful pairing.

1.2 For rocker light switch:press the switch for 10 times (ON/OFF cycle for 5 times) to hear the beep sounds as Di-Di(2 times) for successful pairing.

1.3 For reset button:

a.for button 1:press the button on the module for once to hear the beep sounds as Di(1 second),then long press the button on the module to hear the beep sounds as Di-Di(2 times) for successful pairing.

b.for button 2:press the button on the module for twice to hear the beep sounds as Di...(2 seconds),then long press the button on the module to hear the beep sounds as Di-Di(2 times)for successful pairing.

2. How to clear up the RF code

2.1 For reset switch:press the switch for 5 times to hear the beep sounds as Di-Di(2 times),and press the switch for 5 times again after 5 seconds to hear the beep sounds as Di-Di-Di-Di(4 times) for successful clearing.

17

English

English

18

2.2 For rocker light switch:press the switch for 10 times (ON/OFF cycle for 5 times) to hear the beep sounds as Di-Di(2 times),and press the switch for 10 times (ON/OFF cycle for 5 times) again after 5 seconds to hear the beep sounds as Di-Di-Di-Di(4 times) for successful clearing.

2.3 For reset button:

a. for button 1: press the button on the module for once to hear the beep sounds as Di(1 second),then long press the button on the module to hear beep sounds as Di-Di(2 times),release your finger for 5 seconds and long press the button again to hear the beep sounds as Di-Di-Di-Di(4 times) for successful clearing.

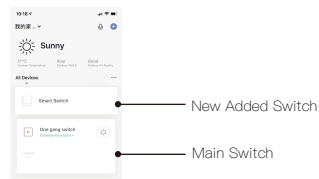
b. for button 2: press the button on the module for twice to hear the beep sounds as Di...(2 seconds),then long press the button on the module to hear beep sounds as Di-Di(2 times),release your finger for 5 seconds and long press the button again to hear the beep sounds as Di-Di-Di-Di(4 times) for successful clearing.

3.3 How to achieve multi-control association

Note:Please confirm you have successfully finished the zigbee link method above for adding this switch to your Smart Life App before the association.

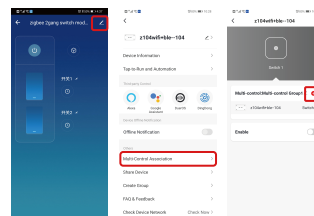
1.WiFi add another smart switch to the same Smart Life/Tuya App.(If there is a smart switch having been added before to the app,just go to next step.)

Note:There is no need to wire the new added switch to the light,only L and N are required for wiring.



2.Then you will see two devices in the app and click the main switch(as One gang switch as below) by entering into the next operation.

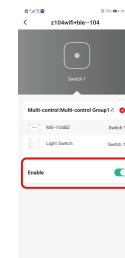
3.Click  in the upper right corner and choose "Multi-Control Association", and then click "+" in the right corner



4.Choose the switch that you want to associate to and then choose the switch button that you want to control the same light.

5.Then go back to previous page,you will see two items in the page,one is your main switch,the other is the one you associate just now.

Note:Please confirm the associated switch is enabled.



6.Now you are able to control your light with two switches.Do not associate another button in the same switch for multi-control.

21

English

English

22

19

English

English

20

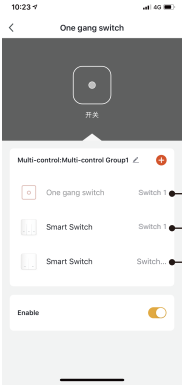
23

English

English

24

7.If you want to add another third or more smart switches to control your light,just repeat the steps above.And you will see the result as below when you associate another new switch.



25

English

English

26

SERVICE

- 1.During the free warranty period, if the product breaks down during normal use, we will offer free maintenance for the product.
- 2.Natural disasters/man-made equipment failures, disassembly and repair without the permission of our company, no warranty card, products beyond the free warranty period, etc., are not within the scope of free warranty
- 3.Any commitment (oral or written) made by the third party (including the dealer/service provider) to the user beyond the warranty scope shall be executed by the third party
- 4.Please keep this warranty card to ensure your rights
- 5.Our company may update or change the products without notice. Please refer to the official website for the updates.

RECYCLING INFORMATION

All products marked with the symbol for separate collection of waste electrical and electronic equipment (WEEE Directive 2012/19 / EU) must be disposed of separately from unsorted municipal waste. To protect your health and the environment, this equipment must be disposed of at designated collection points for electrical and electronic equipment designated by the government or local authorities.



Correct disposal and recycling will help prevent potential negative consequences for the environment and human health. To find out where these collection points are and how they work, contact the installer or your local authority.

27

English

WARRANTY CARD

Product Information

Product Name _____
Product Type _____
Purchase Date _____
Warranty Period _____
Dealer Information _____
Customer's Name _____
Customer Phone _____
Customer Address _____

Maintenance Records

Failure date	Cause Of Issue	Fault Content	Principal

28

Thank you for your support and purchase at we Moes,we are always here for your complete satisfaction,just feel free to share your great shopping experience with us.



If you have any other need,please do not hesitate to contact us first,we will try to meet your demand.

FOLLOW US

@moessmart moes
 @moes_smart @moes_smart
 @moes_smart www.moes.net



WENZHOU NOVA NEW ENERGY CO.,LTD

Address: Power Science and Technology
Innovation Center, NO.238, Wei 11 Road,
Yueqing Economic Development Zone,
Yueqing, Zhejiang, China
Tel:+86-577-57186815
Email:service@moeshouse.com



AMZLAB GmbH
Laubenhof 23, 45326 Essen
Made In China

AL23

25

English

English

26

27

English

English

28