

Smart Light Bulb

User Manual (ZigBee3.0)

WORKS WITH
Google AssistantWORKS WITH
Amazon Alexa

• Bitte scannen Sie den QR-Code, um das deutsche Handbuch, das Installationsvideo und die Funktionseinführung zu erhalten

• Escanee el código QR para obtener el manual en español, el video de instalación y la introducción de la función

• Veuillez scanner le code QR pour obtenir le manuel en français, la vidéo d'installation et l'introduction des fonctions

• Отсканируйте QR-код, чтобы получить руководство на русском языке, видео по установке и описание функций

• Leia o código QR para obter o manual em português, o video de instalação e a introdução das funções



请扫描二维码获取中文的说明书、安装视频及功能介绍

Important information

- ◆ It is recommended that the fittings are installed by a qualified electrician ensuring the installation complies with current IEE wiring regulations & local building control
- ◆ Always switch off mains supply before installation

Preparation for use

1.APP Download MOES APP

Download on the
App StoreGET IT ON
Google Play

MOES App is upgraded as much more compatibility than Tuya Smart/Smart Life App, functional well for scene controlled by Siri, widget and scene recommendations as the fully new customized service.

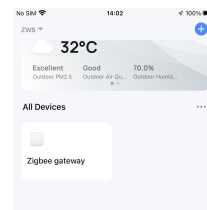
(Note: Tuya Smart/Smart Life App still works, but MOES App is highly recommended)

2.Register or Log in

Enter the Register/Login interface; tap "Register" to create an account by entering your phone number to get verification code and "Set password". Choose "Log in" if you already have a MOES account.

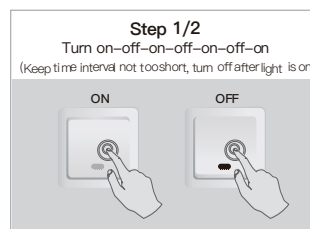
Steps for connecting the APP to the device

1.Make sure your Smart MOES Smart APP has successfully connected to a Zigbee gateway.



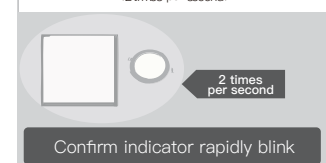
2.Reset:The bulb by ON/OFF for 3 times until it flashes.

Please follow the 2 steps below:

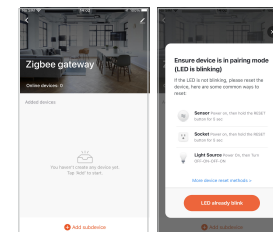


Step 2/2

Confirm light Lamps and lanterns is now rapidly flashing (2times per second)

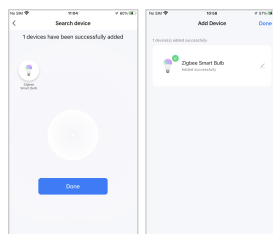


3.Enter the gateway.Please follow the picture below to finish as "Add subdevice" → LED already blink, and the connecting will take about 10-120 seconds to complete depending on your network condition.

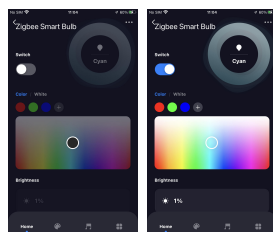


Ensure the device is within the effective signal coverage of your smart ZigBee gateway for successful connection into the ZigBee gateway in MOES APP.

4.Add the device successfully, you can edit the name of the device to enter the device page by click "Done".



5.And now you can enjoy the smart automation by controlling the smart bulb anywhere you like.



SERVICE

- 1.During the free warranty period, if the product breaks down during normal use, we will offer free maintenance for the product.
- 2.Natural disasters/man-made equipment failures, disassembly and repair without the permission of our company, no warranty card, products beyond the free warranty period, etc., are not within the scope of free warranty
- 3.Any commitment (oral or written) made by the third party (including the dealer/service provider) to the user beyond the warranty scope shall be executed by the third party
- 4.Please keep this warranty card to ensure your rights
- 5.Our company may update or change the products without notice. Please refer to the official website for the updates.

RECYCLING INFORMATION

All products marked with the symbol for separate collection of waste electrical and electronic equipment (WEEE Directive 2012/19 / EU) must be disposed of separately from unsorted municipal waste. To protect your health and the environment, this equipment must be disposed of at designated collection points for electrical and electronic equipment designated by the government or local authorities. Correct disposal and recycling will help prevent potential negative consequences for the environment and human health. To find out where these collection points are and how they work, contact the installer or your local authority.



Product Information

Product Name _____
Product Type _____
Purchase date _____
Warranty Period _____
Dealer Information _____
Customer's Name _____
Customer Phone _____
Customer Address _____

Maintenance Records

Failure date	Cause Of Issue	Fault Content	Principal

Thank you for your support and purchase at we Moes, we are always here for your complete satisfaction, just feel free to share your great shopping experience with us.



If you have any other need, please do not hesitate to contact us first, we will try to meet your demand.

FOLLOW US

@moessmart MOES.Official
@moes_smart @moes_smart
@moes_smart www.moes.net

AMZLAB GmbH
Laubenhof 23, 45326 Essen

EVATOST CONSULTING LTD
Address: Suite 11, First Floor, Moy Road
Business Centre, Taffs Well, Cardiff,
Wales, CF15 7QR
Tel: +442921680945
Email: contact@evatmaster.com

WENZHOU NOVA NEW ENERGY CO., LTD
Address: Power Science and Technology
Innovation Center, NO.238, Wei 11 Road,
Yueqing Economic Development Zone,
Yueqing, Zhejiang, China
Tel: +86-577-57186815
Email: service@moeshouse.com
Made In China