

# BINTHIN Intelligent Curtain Introduction

HANGZHOU BINTHEN INTELLIGENCE TECHNOLOGY CO., LTD (BINTHEN) focuses on the design, research and development, manufacturing, and sales of intelligent curtain products. BINTEN mainly produces intelligent home products such as curtain electric rails, electric curtain lifting systems, electric Roman poles, curtain tubular motors and controllers, shutter motors and controllers, opening and closing curtain motors and controls, and supporting products.

Intelligent curtain motor for every common home

Manual Operation: When powered on, the curtain could be pull by hand with 10cm. Then the curtain open or close automatically.

Manual operation without power: Without power, the curtain could be controlled by hand.

Obstacle stop function: the motor could stop when it meets obstacle ,in order to protect the system.

Automatical position: motor could remember the close and open position, users do not need to reset.

Multi-control: users can choose different ways to control, such as remote contorl or switch.

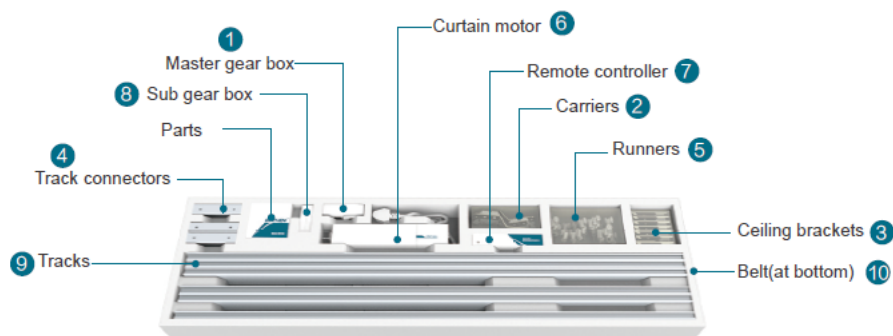
Freely assembling: DIY design and customized tracks.

This document contains important technical and safety information about the device and its safety use and installation. Before beginning the installation, please read this guide and any other documents accompanying the device carefully and completely. Failure to follow the installation procedures could lead to malfunction, danger to your health and life, violation of the law or refusal of legal and/or commercial guarantee (if any).

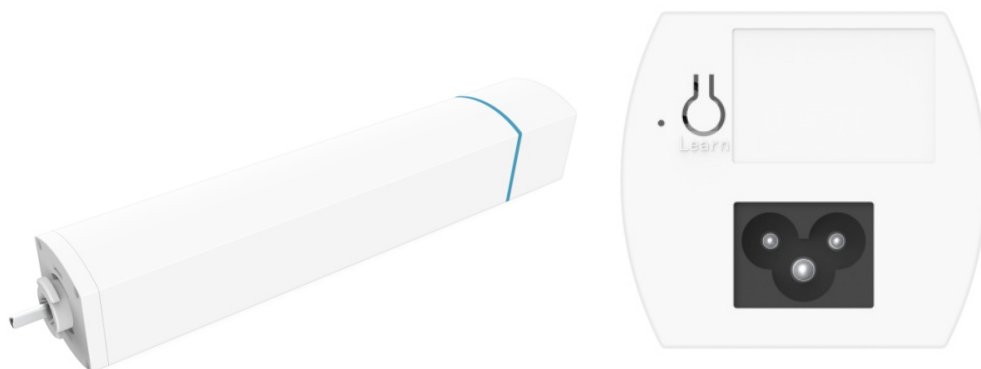
BINTHEN is not responsible for any loss or damage in case of incorrect installation or improper operation of this device due to failure of following the user and safety instructions in this guide.

**Attention! Please refer to the User Manual and Intelligent Control Manual for complete installation steps and usage instructions.**

# Motorized Curtain Track System Instruction



## Motor Parameters



Product Model	Torque	Operating Voltage	Frequency	Power	Max Load	Runing Noise	Protection Level	Communication Type	Signal Frequency	Maximum Average EIRP Power
BCM500DS-TYW	1.2Nm	AC100V-240V	50/60HZ	40W	50KG	35Db	IP3X	Wifi 2.4G	433.93MHz	15.55dBm
BCM500DS-TYW-2Nm	2.0Nm	AC100V-240V	50/60HZ	80W	80KG	35Db	IP3X	Wifi 2.4G	433.93MHz	15.55dBm
BCM500DS-TYZ	1.2Nm	AC100V-240V	50/60HZ	40W	50KG	35Db	IP3X	ZigBee 2.4G	433.93MHz	15.55dBm
BCM100DC	1.2Nm	AC100V-240V	50/60HZ	40W	50KG	35Db	IP20	switch	x	x
BCM100D5X	1.2Nm	AC100V-240V	50/60HZ	40W	50KG	35Db	IP20	switch	x	x
BCM100D-RS485	2.0Nm	AC100V-240V	50/60HZ	80W	80KG	35Db	IP20	Z-wave	868MHz	15.55dBm

Operational range (depending on terrain and building structure): up to 50 m outdoors, up to 30 m indoors.

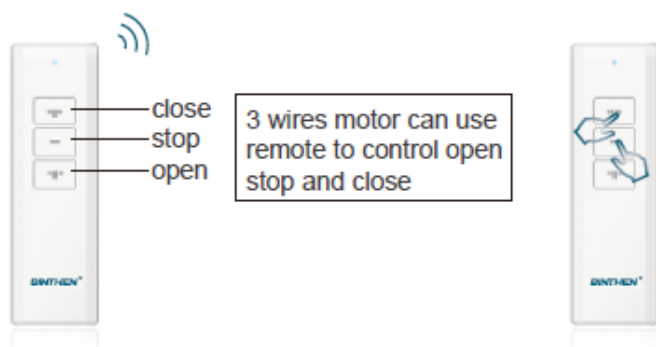
**CAUTION!** Do not let children play with curtain motors that are powered on.

# 3 WIRES MOTOR SOLUTIONS

## Functions

3 wires motor as basic motor can be control by remote,weak current dry contact switch and so on, applicable to multi-scene.

## Change the control mode



Change the control mode for weak current dry contact switch:

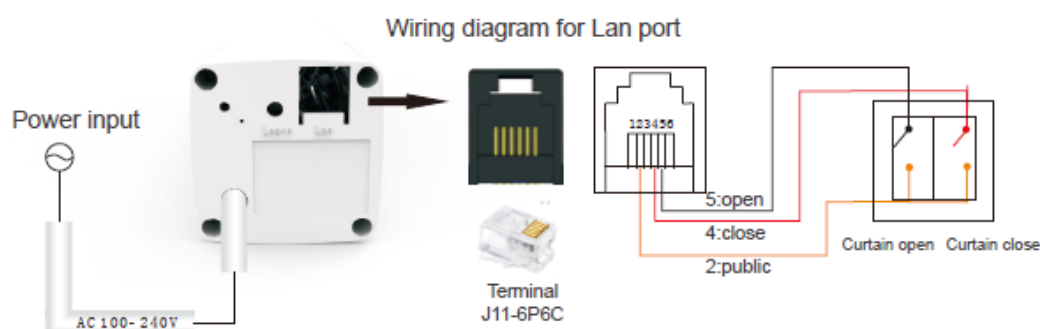
Hold close and stop buttons in same time for 3 seconds, the motor will vibrate once,control mode change to next mode.

Mode1:applicable to double interlock switch(Factory default settings)

Mode2:applicable to double reset switch

Mode3:applicable to single reset switch

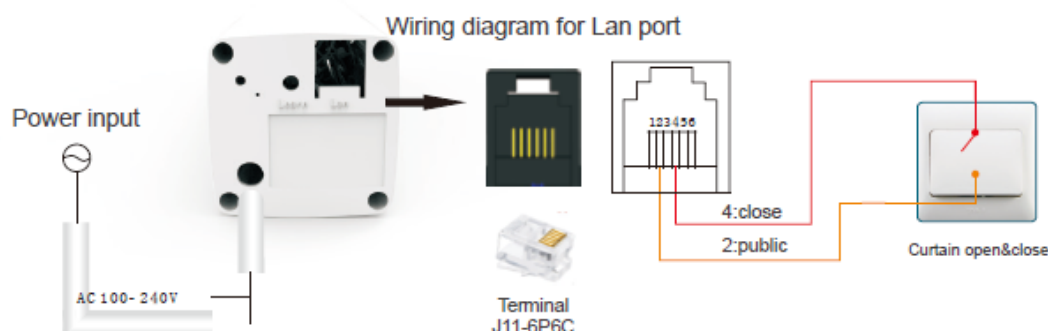
## Wiring diagram for weak current double button switch



The switch type of weak current double button switch

- 1.Interlock switch  
Motor control mode should be mode 1.
- 2.Reset switch  
Motor control mode should be mode 2.

## Wiring diagram for weak current double button switch



The switch type of weak current single button switch

- Reset switch  
Motor control mode should be mode 3.

# 4 WIRES MOTOR SOLUTIONS

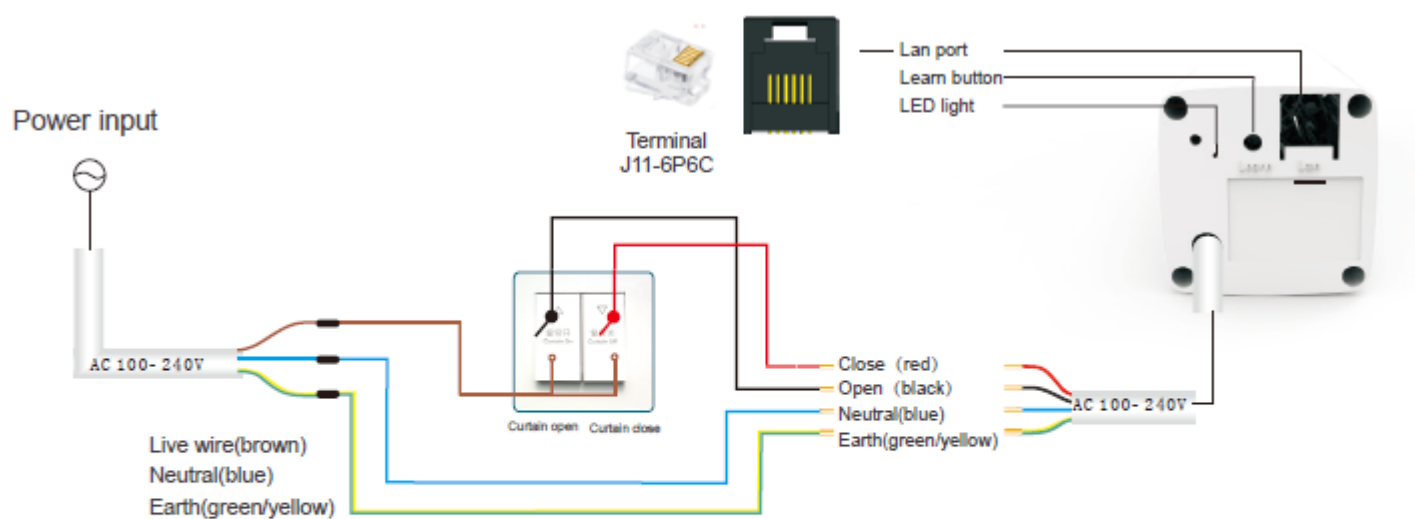
## Functions

4 wires motor not possess RF control, not support remote control, only use strong current switch.  
Applicable to hotel, smart home and decoration project etc.

## Wiring diagram and functions



Notice:  
switch type is strong current double interlock switch,  
4 wires motor can't connect with weak current switch



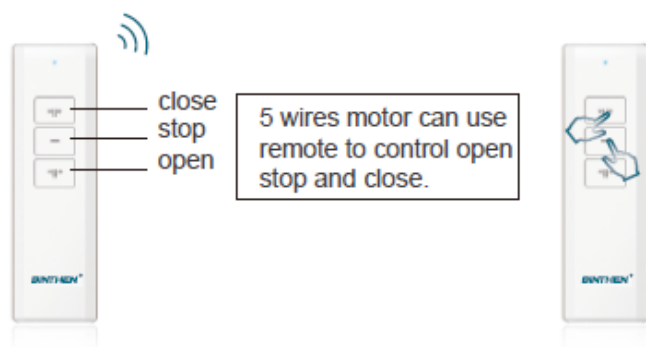
## Wiring diagram

# 5 WIRES MOTOR SOLUTIONS

## Functions

5 wires motor possess RF control, support remote control, strong current dry contact switch, strong current switch, plug-in card power supply and so on. Applicable to hotel, smart home and decoration project etc.

## Change the control mode



Change the control mode for weak current dry contact switch:

Hold close and stop buttons in same time for 3 seconds, the motor will vibrate once, control mode change to next mode.

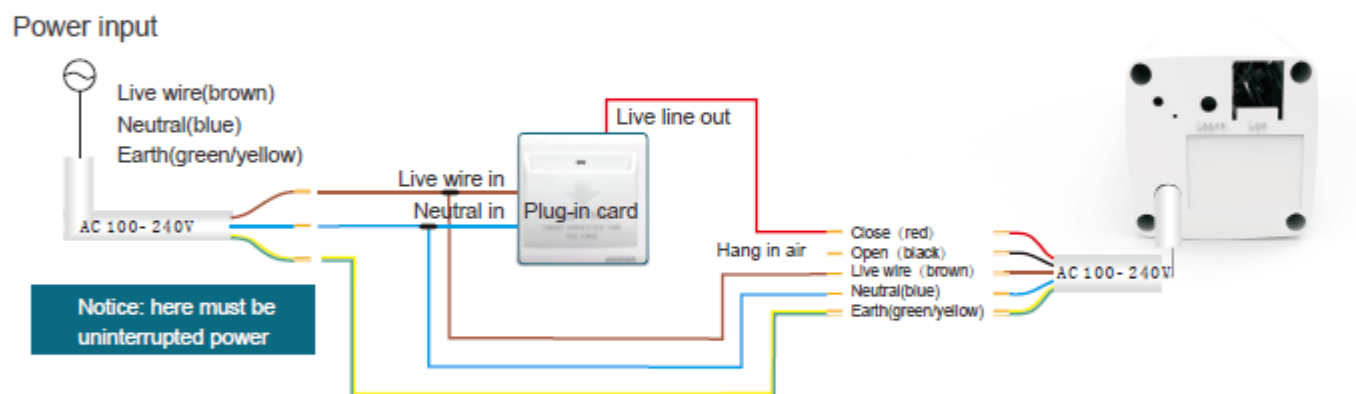
Mode1: applicable to double interlock switch (Factory default settings)

Mode2: applicable to double reset switch

Mode3: applicable to single reset switch

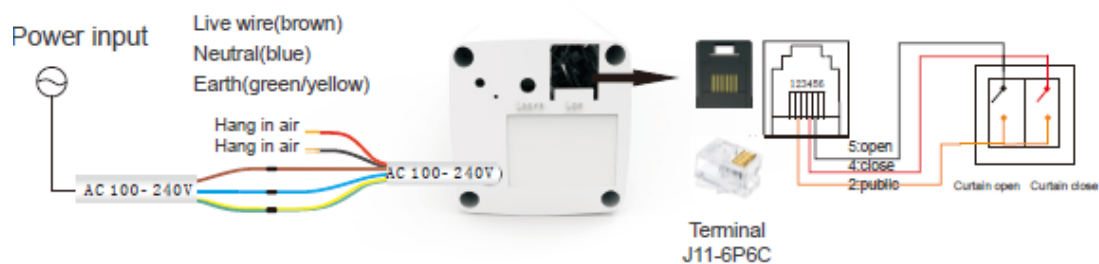
Mode4: applicable to plug-in card power supply

## Wiring diagram for plug-in card power supply



The control mode should be mode 4 when use plug-in card power supply, take off card curtain will open, put in card curtain will close.  
If you need to use switch and plug-in card in same time, you can only connect weak current double interlock button with Lan port, can't use strong current switch

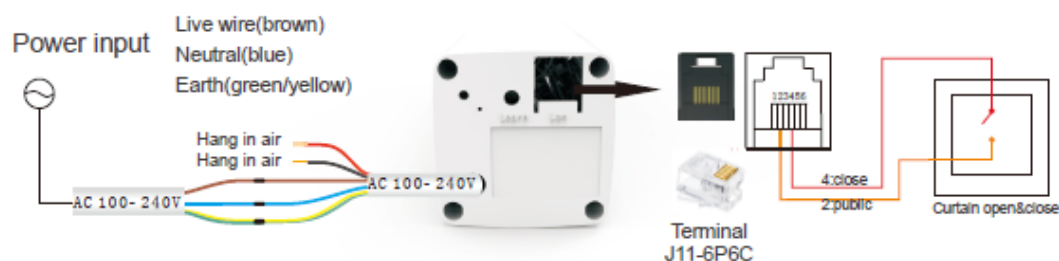
## Wiring diagram for weak current double button switch



The switch type of weak current double button switch

- 1.Interlock switch  
Motor control mode should be mode 1.
- 2.Reset switch  
Motor control mode should be mode 2.

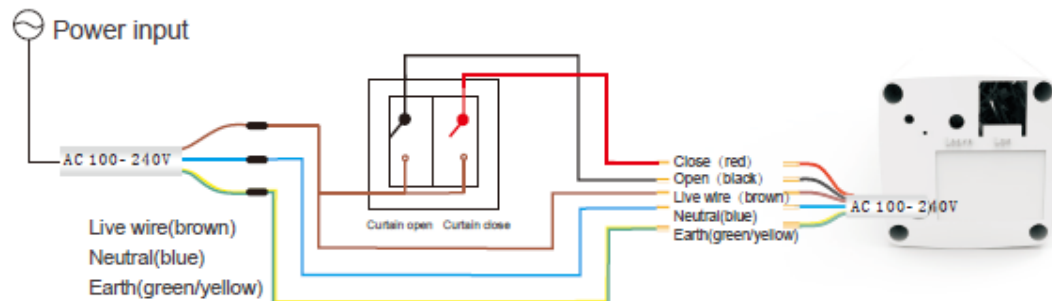
## Wiring diagram for weak current single button switch



The switch type of weak current single button switch

- Single reset switch  
Motor control mode should be mode 3.

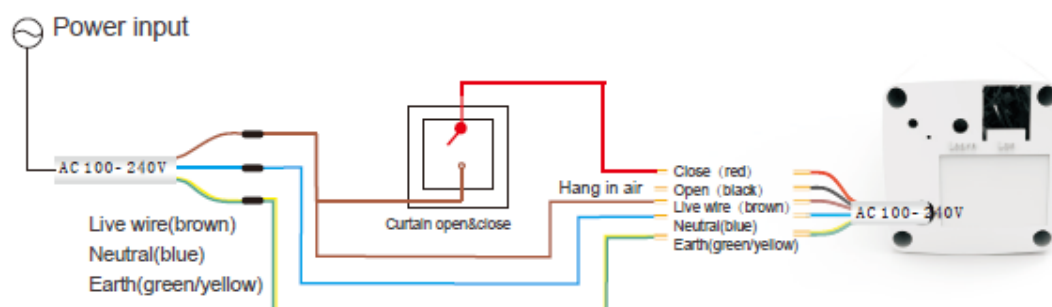
## Wiring diagram for strong current double button switch



The switch type of strong current double button switch

- 1.Interlock switch  
Motor control mode should be mode 1.
- 2.Reset switch  
Motor control mode should be mode 2.

## Wiring diagram for strong current single button switch



The switch type of strong current single button switch

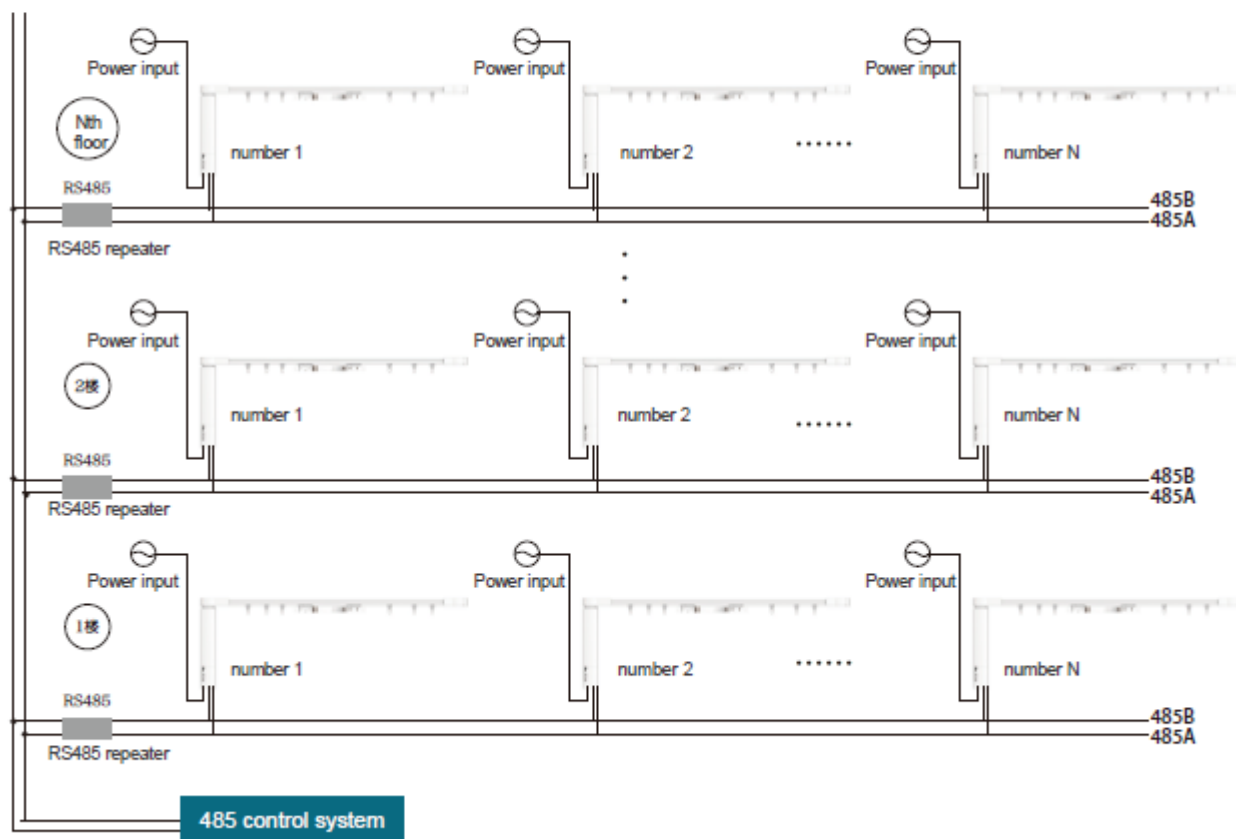
- Single reset switch  
Motor control mode should be mode 3.

# RS-485 MOTOR SOLUTIONS

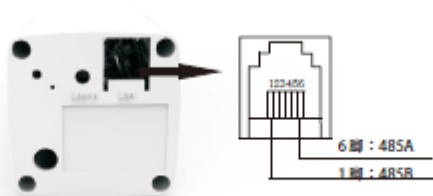
## Functions

RS-485 motor possess RF control, support remote control and RS485 bus control. Applicable to smart home and hotel project etc.

## Wiring diagram for RS485



## Wiring diagram for 485



Notice: 485A and 485B need to be connected sequentially

## Other control modes

RS485 motor can be control by remotes and weak current dry contact switch, more details please check 3 wires motor solutions.

# Remote control Instruction



**BE301**

Single channel  
hand-held emitter



**BE302**

Double channels  
hand-held emitter



**BE316**

16 channels LCD emitter

Input voltage: 2\*1.5(NB.7 battery)  
Frequency: 433.92MHZ  
Power: 10MW  
Working temperature: -10℃~50℃  
Distance: >50m

Matched with wall mounting bracket



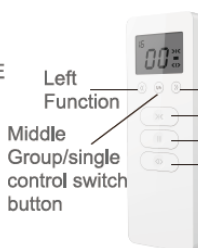
**BE301**

CLOSE  
STOP  
OPEN



**BE302**

CLOSE  
STOP  
OPEN



**BE316**

Left Function  
Middle Group/single control switch button  
Right Function  
CLOSE  
STOP  
OPEN



Hand-held emitter



Hand-held wall  
mounting bracket

## Matching code—BE301

Here are 2 methods for emitters to match code: shortly press MATCH button on motor or copy code. When motor is in being matched state, press the set button of a totally new emitter, the motor will vibrate once, then matching code successfully.

Shortly press MATCH button of motor



Press MATCH button  
when powered on



Press SET button of a emitter  
(never matched before)



The motor vibrate once ,  
it means matching code finished



**BE301**

## Matching code—BE302

Here are 2 methods for emitters to match code: shortly press MATCH button on motor or copy code. When motor is in being matched state, press the set button of a totally new emitter, the motor will vibrate once, then matching code successfully. When choosing channels on BE302, press the stop button on the side you want firstly, then continue.

Shortly press MATCH button of motor



Press MATCH button  
when powered on



Take the right channel for  
an example press the STOP  
on right firstly



Press SET button of  
a emitter  
(never matched before)



The motor vibrate once ,  
it means matching code  
finished



**BE302**

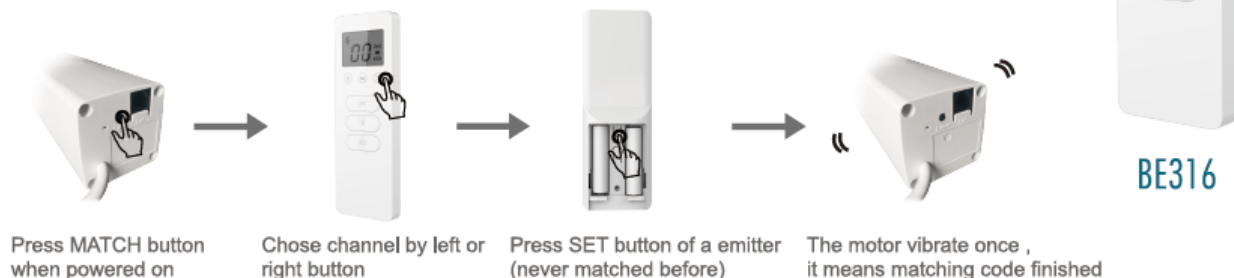


## Matching code—BE316

Here are 2 methods for emitters to match code:shortly press MATCH button on motor or copy code  
When motor is in being matched state,press the set button of a totally new emitter,the motor will vibrate once,then matching code successfully

Chose 16 channels by left or right button ,every time you press left or right ,number of channel appears on screen ,it shows the channel you want.

Shortly press MATCH button of motor



### ① Set MAX channel number



Long press left and right for 5s the max number on lower right corner flashes

NOTE:Max number is 16 channels



Press left to reduce



Press right to increase



Press middle S/A to confirm

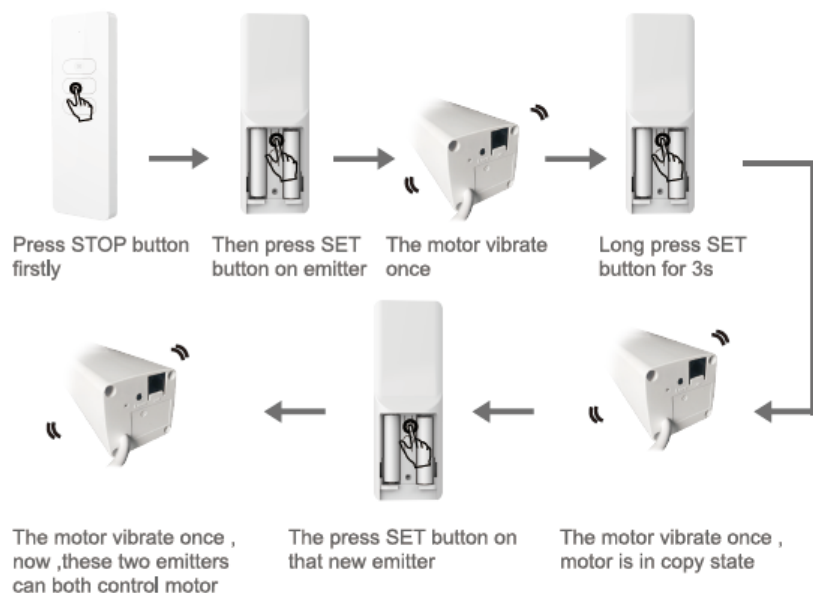
### ② Switch single/all channel



Press S/A ,the number of channel will appear on screen (such as:01,02), it's single channel , 00 stands for all channels

## Copy to match code

Take BE301 for an example



**All BE series emitter can copy each other to match code ,**

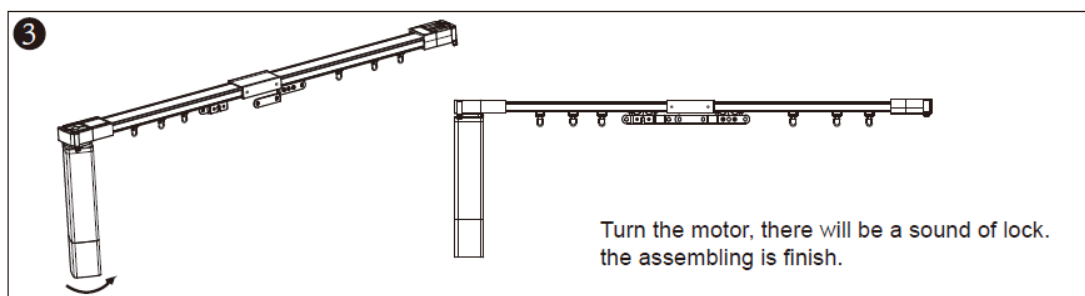
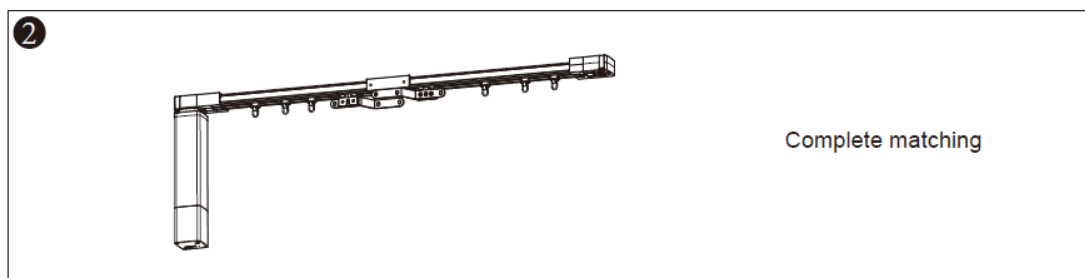
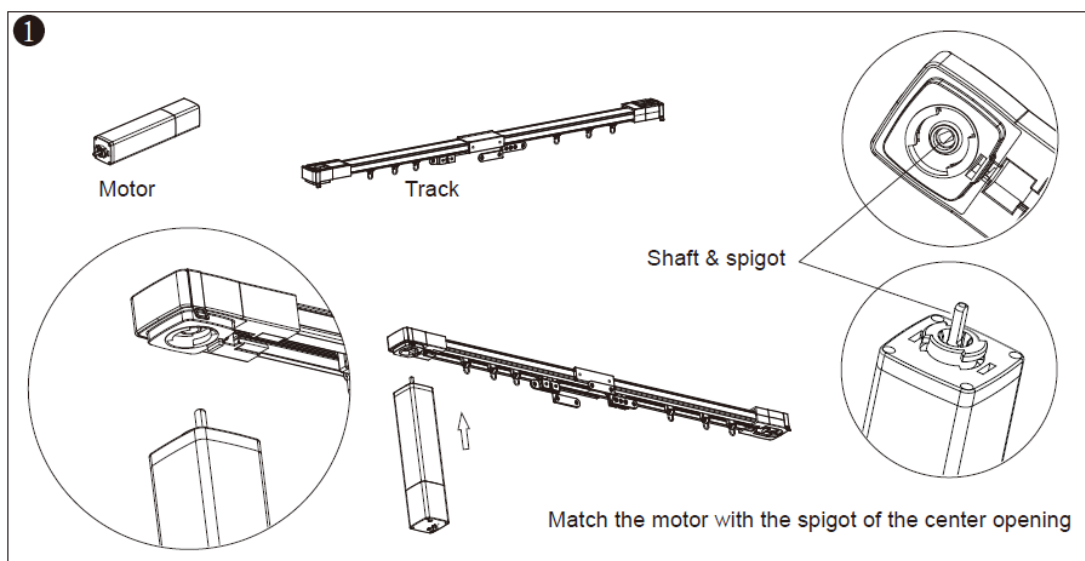
**They can not copy other brands emitters**

## Other operations please refer to motor manual

Note: 1,Do not put emitter in humid environment.  
2,Replace battery timely when it's out of power.  
3,Do not press buttons over 10s every time

# Notice

1. CAUTION! Danger of electrocution. When Mounting/installating the Device directly to the power grid has to be performed with caution by a qualified electrician. Do not open the motor or attempt repairs or modifications. Opening the motor will void the warranty.
2. CAUTION! Connect the Device only in the way shown in Users Manual. Any other method could cause damage and/or injury.
3. CAUTION! Use the Device only with a power grid which comply with all applicable regulations. short circuit in the power grid may damage the Device.
4. CAUTION! Do not install the device at a place that is possible to get wet.
5. CAUTION! Do not allow children to play with the Device. Keep the Devices and Remote control away from children.
6. RECOMMENDATION! The Device may be connected to and may control electric circuits and appliances only if they comply with the respective standards and safety norms.
7. The curtain motor must be installed on the corresponding curtain track as below for normal use.



## Declaration of conformity

Hereby, HANGZHOU BINTHEN INTELLIGENCE TECHNOLOGY CO.,LTD declares that the the specified curtain motor model BCM700D-TY,BCM100DA,BCM100D-tuya zigbee,BCM100DC, BCM100D5X,BCM100D5X-2Nm,BCM100D-RS485,BCM100DB, BCM100DB-tuya zigbee,BCM300DS,BCM300D5X,BCM300D-TY, BCM300DB,BCM400D-KNX,BCM500DS-TYW, BCM500DS-TYW-2Nm,BCM500DS-TYZ,BCM500DS-Zwave, BCM500DS-HK,BCM10D-TYB,BCM10D-TYZ.BCM10D-TYW. BCM400D-Matter,BCM400D-Mudbus,BCM20D,BCM20D-TYZ, and remote controller model BE301E,BE302E,BE316,BE601,BE602,BE201B,E202,BE102,BE206,BE216L,BE306 are in compliance with **radio equipment Directive 2014/53/ EU**.

The full text of the EU declaration of conformity is available at the following internet address:

[https://cdn.shopify.com/s/files/1/0236/7776/3648/files/curtain\\_motor\\_DOC\\_60335.pdf?v=1705047367](https://cdn.shopify.com/s/files/1/0236/7776/3648/files/curtain_motor_DOC_60335.pdf?v=1705047367)

[https://cdn.shopify.com/s/files/1/0236/7776/3648/files/curtain\\_motor\\_DOC\\_IEC62368.docx?v=1705047385](https://cdn.shopify.com/s/files/1/0236/7776/3648/files/curtain_motor_DOC_IEC62368.docx?v=1705047385)

[https://cdn.shopify.com/s/files/1/0236/7776/3648/files/remote\\_DOC.pdf?v=1705047385](https://cdn.shopify.com/s/files/1/0236/7776/3648/files/remote_DOC.pdf?v=1705047385)

Manufacturer: HANGZHOU BINTHEN INTELLIGENCE TECHNOLOGY CO.,LTD

Address: BUILDING 1 FLOOR 9, Heting Street899, Qingshanhu Street, Lin 'an District, Hangzhou City, Zhejiang Province, China

Tel.: +86- 571-88697092

