

# Settings Manual ( Eco-Dim.07 Zigbee)

## 1) Factory Reset



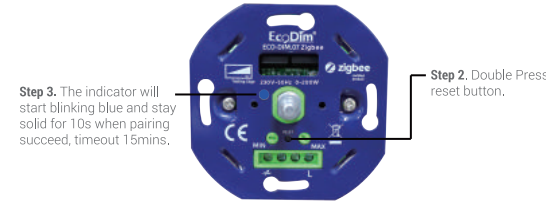
Step 1. Press the reset button for 5s.

Step 2. When the Indicator stay in Red for 10s, reset finished.

Please Note: All configuration will be reset after the device is reset or remove from the network.

## 2) Include to a Zigbee Network

Step 1. Remove the device from previous Zigbee network if it has already been added to, otherwise pairing mode will be fail.

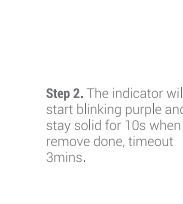


Step 2. Double Press the reset button.

Step 3. The indicator will start blinking blue and stay solid for 10s when pairing succeed, timeout 15mins.

## 3) Remove

Method 1. From your Zigbee hub interface, choose to delete or reset the device as instructed.  
Method 2. Remove from the Device, see below instructions.



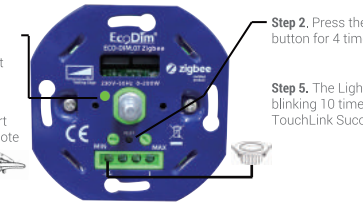
Step 1. Press the reset button for 3 times.

Step 2. The indicator will start blinking purple and stay solid for 10s when remove done, timeout 3mins.

## 4) TouchLink

Step 3. The indicator will start blinking green and stay solid for 10s when pairing succeed, timeout 15mins.

Step 4. Bring the remote within 10cm of the smart dimmer and set the remote into TouchLink commissioning.



Step 2. Press the reset button for 4 times.

Step 5. The Light will blinking 10 times when TouchLink Succeed.

## Note:

- a. When both devices (Dimmer and remote) not included in the Zigbee Network, each dimmer can link with one remote max.
- b. When both devices are included in the same Zigbee network, each dimmer can link with max 30 remotes.
- c. For Philips Hue Hubs and Amazon Echo Plus, add remote and device to network first then touchlink.

## 5) Find and Bind

Step 1. Make sure the device and remote already added to the same Zigbee network.

Step 3. The indicator will start blinking yellow and stay solid for 10s.

Step 4. Set the remote into find and bind mode and enable it to find and bind commissioning. Please refer to the manufacturers instructions of how.



Step 2. Press the reset button for 5 times.

## 6) Creating a zigbee network & allow other devices to be added into the network

Step 2. The white indicator will start flashing and stay solid for 10s to show the dimmer has creating the zigbee network successfully.

Step 4. set another device or remote into network pairing mode and added into the network, please refer to manufacturers manuals how.

Step 5. Pair more devices and remotes into the network if you like, please also refer to the manufacturers manuals how.

Step 6. Bind the added devices and remotes through Touchlink commissioning and the devices in the network can be controlled by the remotes.

## Note:

- 1. Each added device can link and be controlled by max 30 added remotes.
- 2. Please refer to remote instruction of how many devices can be linked.



Step 1. Press the reset button for 6 times.

Step 3. Press the reset button for 7times to allow other devices to be added into the network. The red indicator light will flashing continuously.



<10cm TouchLink

## Index- Zigbee Clusters the device supports

### 1) Input Cluster

- 0x0000: Basic
- 0x0003: Identify
- 0x0004: Groups
- 0x0005: Scenes
- 0x0006: On/off
- 0x0008: Level Control
- 0x0b05: Diagnostics

### 2) Output Cluster

- 0x0019: OTA



EcoDim  
 Dr. Huber Noodtstraat 89  
 7001DV Doetinchem  
 Info@ecodim.nl  
 +31 (0)314 844691



www.ecodim.nl



8 719322 371263