

Aqara

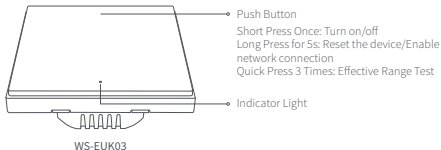


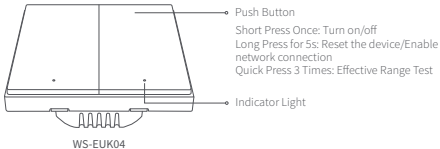
Smart Wall Switch H1 EU (With Neutral) User Manual	·01
Smarter Lichtschalter H1 EU (mit Neutralleiter) Gebrauchsanleitung	·12
Interruptor Inteligente de Pared H1 EU (Con Neutro) Manual de Usuario	·23
Interrupteur Mural Intelligent H1 EU (Avec Neutre) Manuel d'instructions	·34
Interruttore da muro intelligente HE EU (Con neutro) Guida Utente	·46
Умный настенный выключатель H1 EU (с нейтралью) Руководство пользователя	·57
智能牆壁開關H1 EU (零火線版) 使用說明書	·67

## Product Profile

Based on the Zigbee 3.0 wireless communication protocol, the Aqara Smart Wall Switch H1 EU (With Neutral) is a smart switch that turns on and off the power of lights and other connected devices. After binding with an Aqara hub, it can implement remote control via the Aqara Home app, timed control, power detection, power statistics and other functions, and can work with other smart devices in smart home automations.

\* This product requires a compatible Zigbee 3.0 hub. Some features require a specific hub. For a detailed list, please visit: [www.aqara.com/support](http://www.aqara.com/support)





## Warnings

1. This product is not a toy. Please keep children away from this product.
2. This product is designed for indoor use only.
3. Do not use in humid environments or outdoors.
4. Beware of moisture. Do not spill water or other liquids onto the product.
5. Do not place this product near a heat source. Do not place it in an enclosure unless there is normal ventilation. Do not attempt to repair this product by yourself. All repairs should be performed by an authorized professional.

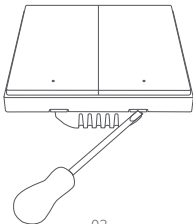
6. This product is suitable for improving the quality of your home life and reminding you about the device status. If a user violates the product use instructions, the manufacturer will not be liable for any risks and property losses.

**Installation Method** (The picture shows the Double Rocker version as an example)

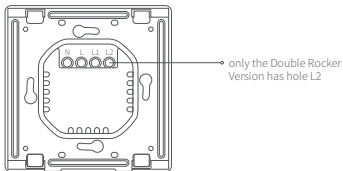


Please make sure that the power at circuit breaker or fuse box is turned off before wiring!

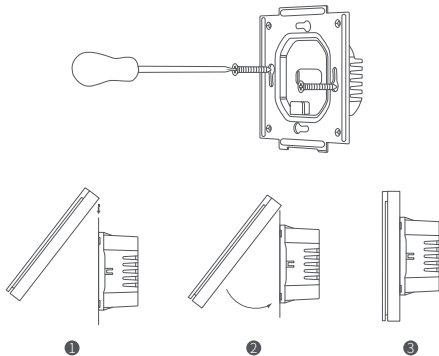
1. Open the switch panel with a flat-blade screwdriver.



2. Loosen the terminal screw on the back of the switch with the screwdriver, connect the live wire to the hole L, the neutral wire to the hole N, and the load (light) wire to the hole L1 and L2 (corresponding to the left and right buttons respectively), and tighten the terminal screws after confirming that the wiring is correct.



3. Mount the switch to the wall junction box with the attached screws and mount the switch plate.



4. Turn on main power at the circuit breaker, and test the switch by pressing the button. If the light can be controlled normally, the switch is working properly!



## Quick Setup

1. Please add the hub to the Aqara Home app according to the Hub Quick Start Guide.
2. Please open the Aqara Home app, and then tap “+” in the top right corner to enter “Add Device (Accessory)” page. Tap the code-scanning icon on the upper right corner, and scan the QR code on the package box, user manual or the back of the switch, or find and select “Smart Wall Switch H1 EU (With Neutral, Single Rocker/Double Rocker)”, and add it according to instructions.

\* If the connection fails, please move the hub closer to the switch, connect to power and try again.

Effective Range Test: Quick press the button on the device 3 times. If the Hub makes voice prompts, it indicates that the device can communicate effectively with the Hub.

## Indicator Light Description

Indicator Light Status	Description
Blue light flashes once	Device is powered on
Blue light flashes quickly	Zigbee network is connecting
Blue light is steady on	Zigbee network works properly and the switch is turned on
Red light flashes quickly	Overload and high temperature alarm
Red light flashes slowly	Zigbee network is not connected
Red light is steady on	The switch panel does not match the in-wall power supply module

## Specifications

Model: WS-EUK03 / WS-EUK04

Dimensions: 85.8×86×37.55mm

Wireless Protocol: Zigbee 3.0

Electrical Rating: 100-250VAC, 50/60Hz, Max. 8A (resistive load),  $\mu$

Operating Temperature: 0 °C ~ 40 °C (32°F ~ 104°F)

Operating Humidity: 0%~95% RH, Non-condensing

Zigbee Operation Frequency: 2405-2480MHz

Zigbee Maximum Output Power  $\leq$  13dBm

What's in the Box: Smart Wall Switch x 1, Quick Start Guide x 1,  
Screw x 2



Online Customer Service: [www.aqara.com/support](http://www.aqara.com/support)

Manufacturer: Lumi United Technology Co., Ltd.

Address: 8th Floor, JinQi Wisdom Valley, No.1 Tangling Road,  
Liuxian Ave, Taoyuan Residential District, Nanshan District,  
Shenzhen, China.

Under normal use of condition, this equipment should be kept a separation distance of at least 20cm between the antenna and the body of the user.

## **EU Declaration of Conformity**

Hereby, [Lumi United Technology Co., Ltd] declares that the radio equipment type [Smart Wall Switch H1 EU (With Neutral, Single Rocker), WS-EUK03/Smart Wall Switch H1 EU (With Neutral, Double Rocker), WS-EUK04] is in compliance with Directive 2014/53/EU. The full text of the EU declaration of conformity is available at the following internet address:  
<http://www.aqara.com/DoC/>



## **WEEE Disposal and Recycling Information**

All products bearing this symbol are waste electrical and electronic equipment (WEEE as in directive 2012/19/EU) which should not be mixed with unsorted household waste. Instead, you should protect human health and the environment by handing over your waste equipment to a designated collection point for the recycling of waste electrical and electronic equipment, appointed by the government or local authorities. Correct disposal and recycling will help prevent potential negative consequences to the environment and human health. Please contact the installer or local authorities for more information about the location as well as terms and conditions of such collection points.

## **UK** UK Declaration of Conformity

**CA** Hereby, [Lumi United Technology Co., Ltd] declares that the radio equipment type [Smart Wall Switch (With Neutral, Single Rocker), WS-EUK03/Smart Wall Switch (With Neutral, Double Rocker), WS-EUK04] is in compliance with Directive 2017 (SI 2017 No. 1206, as amended by SI 2019 No. 696). The full text of the UK declaration of conformity is available at the following internet address: <http://www.aqara.com/DoC/>

### Scan to get the Zigbee 3.0 Install Code

- \* Please read this manual carefully and keep it in a safe place.
- \* If necessary, the contents of this manual will be modified or adjusted without special notice.