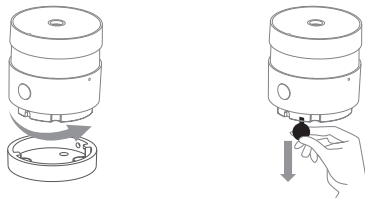


ADUROSMT  
ERIA®

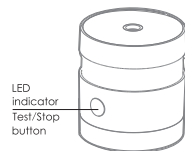
## USER MANUAL WIRELESS SMOKE DETECTOR



1. Rotate the detector against the clock out of the bracket.
2. Remove the battery insulation.

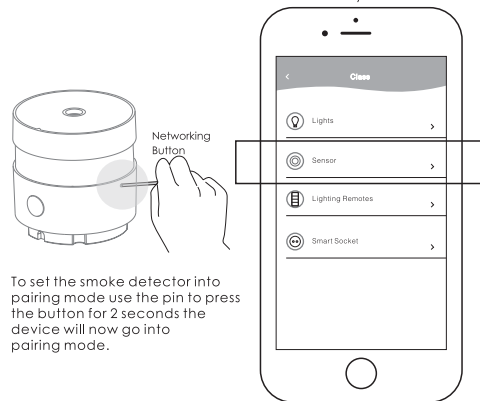


3. Indicators the detector contains a LED indicator to show the status of the detector.



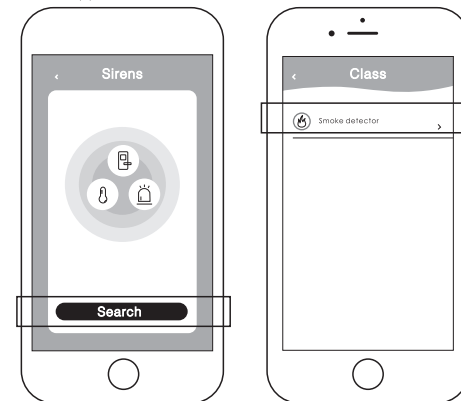
Connection mode	LED will flash for approximately 1 min.
Connected successfully	LED will light up for 3 sec (The APP will also indicate when the connection is successful)
Detector reset	LED will flash 6x
Detector Alarm	LED will flash and detector will sound (85db). To stop the detector alarm press the Test/Stop button
Detector operation	LED will flash once every 53 sec to indicate the detector is operating correctly
Battery low indication	LED will flash once and gives one beep every 53 sec.

4. Add your detector to the AduroSmart ERIA hub. Open the AduroSmart ERIA app, tap on "Settings" tap on "Devices" on the top in the right corner tap on "+" tap on "Sensors" select "Smoke Detector" and follow the instructions on your screen.

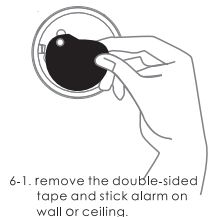


To set the smoke detector into pairing mode use the pin to press the button for 2 seconds the device will now go into pairing mode.

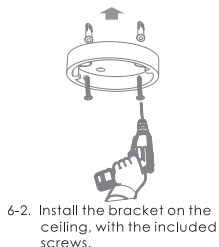
5. Press on search in your Adurosmart APP. When the device is successfully paired, the LED indicator will flash green and the device can be seen in the AduroSmart ERIA app.



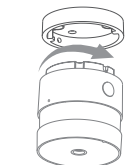
### 6. Installation Illustration



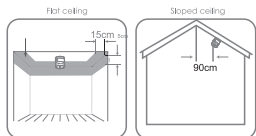
- 6-1. remove the double-sided tape and stick alarm on wall or ceiling.



- 6-2. Install the bracket on the ceiling, with the included screws.



- 6-3. rotate alarm into bracket clockwise.



Place the detector in the center of the room.

Place the detector on the ceiling. In case of a sloped ceiling, place 90 cm from the highest point

- 6-4

### 6-4 Placing the smoke detector

- place the detector in the center on the ceiling. In case of a sloped ceiling, place the detector 90 cm from the highest point.
- To ensure that the sound can be clearly heard in the bedrooms, the smoke detector must be placed no further than 3 meters from a bedroom door.
- It is recommended to install a smoke detector on every floor of your home.
- Place the detector at least 2m away from cooking appliances.
- Relocate the unit if it produces frequent false alarms.
- Do not place the smoke detector near exhaust fans or air-conditioning systems as they can prevent smoke from reaching the smoke detector.
- Avoid placing the detector in bathrooms and other very humid or dusty places.
- Always comply with the local regulations for installation in buildings.

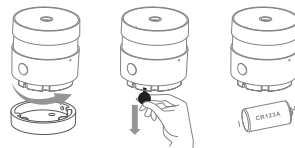
### 7. Hush and Self-test

- Hush function**  
Please make sure that there is no active fire danger when using the hush function. When the alarm is activated by a non emergency such as by steam you are able to press the button to put it in hush mode.  
The hush mode will last for 10 minutes and after it will go back into normal detection mode.
- Self test**  
Press the button on the smoke detector to test the alarm. The detector will sound loud short beeps indicating that the detector is functioning. It is advised to test the smoke detector once a week.



### 8. Battery Replacement

- Replace the battery immediately when the detector is indicating battery low. (up to 3-year battery life)
- Use only a CR123A 3.0V Lithium Battery. Other batteries may cause unreliable operation.
- Press the test button to check operation after replacing the battery.



### 9. Disclaimer

- this product is used as a warning device to aid the user in detecting for the presence of smoke. However, it remains the responsibility of the end-user to prevent, detect and / or extinguish a (smoldering) fire or smoke from accumulating.
- Therefore Adurosmart cannot be held responsible or liable for any damages or injuries resulting from fire, smoke or heat or any subsequent damages.

- Compatibility**  
this photoelectric smoke detector works with the Z1 ZIGBEE Bridge and the ICS-2000 to give additional functionality like receiving push notifications when smoke is detected. Note: for receiving push notifications, a fully working internet connection is required.

### 10. Testing and usage

- Always test the detector using the test mode after placement and after that test it once a week.
- Test the detector once a week. Replace the detector immediately when the test fails.
- Replace the battery immediately when the detector is indicating that the battery is low. (up to 3-year battery life)
- Clean the detector once a month with a soft brush.
- Never use water, cleaners or solvents to clean the detector since it may damage the unit.
- If the detector is damaged replace it immediately.
- The smoke detector will not alert hearing impaired residents. It is recommended to install special smoke detectors to alert hearing impaired residents.
- Never use an open flame of any kind to test this unit. You might accidentally damage or set fire to the unit or to your home.
- Use only a CR123A 3.0V lithium Battery. Other batteries may cause unreliable operation.
- Removal of the battery will render this alarm inoperative.
- Press test button to check operation after replacing the battery.



[www.eria-smart.com/manuals/smokedetector](http://www.eria-smart.com/manuals/smokedetector)