

ADUROS ERIA

USER MANUAL ERIA HUB



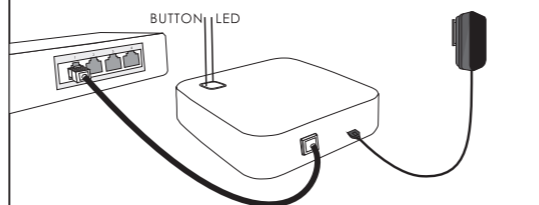
Turn your home into a smart home from anywhere in the world with the Adurosmart Hub! Simply connect to your internet and add on multiple ZigBee products for a complete smart home system. The Adurosmart ERIA Hub allows you to control everything from a single smart bulb to your entire home security system all through the convenience of your smartphone or tablet.
Connects with a wide range of ZigBee devices such as lights, sensors, locks, plugs thermostats and more to make it simple to automate your entire home.



www.adurosmart.com/manuals/eriahub

1. Plug the power cable into the back of the hub.
2. Use the included ethernet cable to connect the hub to your router. Make sure your router is connected to the internet.
3. The LED indicator will show the status of the hub.

- 2B. Wait **60 seconds** for the hub to start up.
- A. **Solid Green** : The Hub is connected.
B. **Solid Blue** : There is no internet connection available to the hub, please check your internet connection.
C. **Solid Red** : The hub is unavailable please reset the system by pressing the button on the hub for 10 seconds.



4. Ensure that your smartphone is connected with your home's wireless network and that your phone has access to the internet.
6. Open the Adurosmart App.

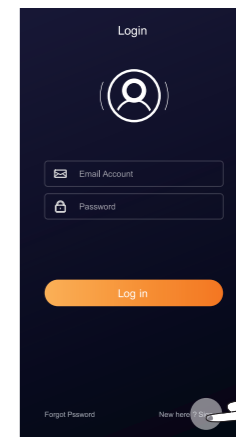
Android



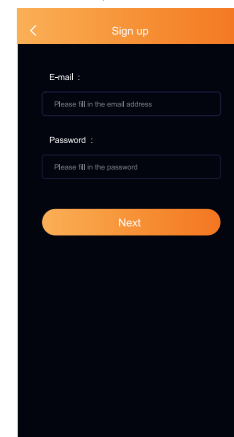
IOS



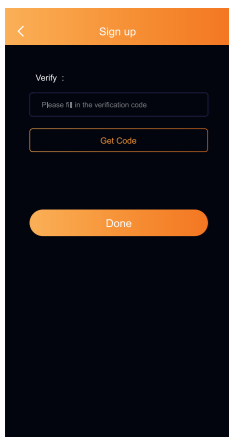
7. At the right bottom corner, press on "New Here? Sign Up." to start the enrollment process.



8. Insert the E-mail address which you want to enroll, and choose a password. After you have inserted all the required information press on "Next" to proceed to enroll.



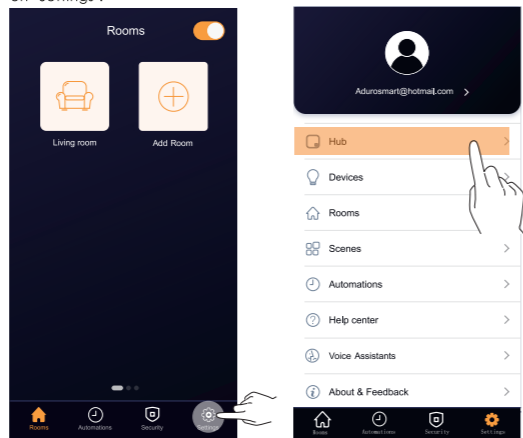
9. Press on the "Get Code" button to receive the authentication code in your email.



10. Enter the 6 digit-alphanumeric authentication code which you have received in your email in the field below and press on "Done".

11. Congratulations! You have successfully enrolled and created your Adurosmart smarhome account which you can use to control your smarhome through the Adurosmart ERIA App.

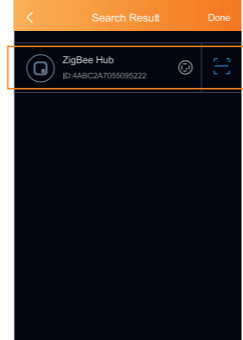
12. We will now proceed to setting up the connection between your smartphone and the Adurosmart ERIA hub. On the bottom right corner press on "Settings".



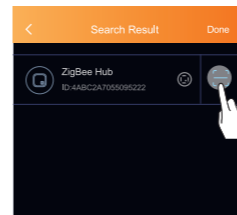
13. Press on Hub.

14. If you are connected to the same network as your Adurosmart ERIA hub then the hub will appear in the list.

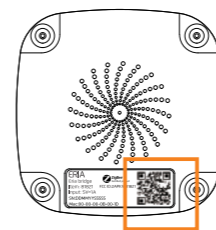
Troubleshoot: If the hub is not showing up in the list please make sure that you are connected to the same wireless network that you connected to the Adurosmart ERIA hub.



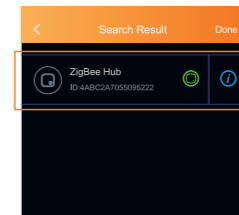
15. Press on the scan button that is shown at the right side of the hub.



16. The QR scanner will start, position the scanner to the back of your Adurosmart ERIA hub and scan the QR code that is printed on the back of the hub.



17. Your hub will now show up in the list as connected and is ready to add ZigBee devices.



NEED HELP? CALL US

For troubleshoots, instruction video's or more information please visit us at www.adurosmart.com/faq

Chat with one of our support agents at www.adurosmart.com

The Netherlands: +31 523687532
Support@Adurosmart.eu